



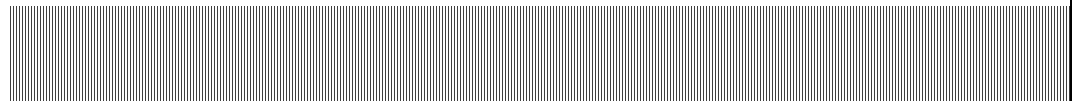
coquina coast
seawater desalination project

Phase 2A Project Report

APPENDIX

H

Hydrodynamic Study Plan



Introduction

As demand for drinking water continues to grow, new alternative water supply options to satisfy the demand are being explored. The proposed Coquina Coast Seawater Desalination Project (the Project) in Flagler County, Florida is being developed to provide a drought-proof option to meet future water demands in the region, while reducing the burden of groundwater sources. In order for the Project to become a viable option, a cost-effective and environmentally friendly site for the plant needs to be identified. This requires a comprehensive study of the hydrodynamic conditions (including currents, salinity, temperature, waves, stratification, and flushing characteristics) to be expected in the coastal waters near the proposed site (FDEP 2010). Figure 1 depicts the locations of available data sources in relation to the proposed locations for the Project. This report presents the hydrodynamic study plan for the Project. In the report, we describe the following tasks that will be performed by the University of Florida:

- Hydrodynamic model simulation
 - a. Far-field simulation
 - b. Near-field dilution/mixing study
- Hydrodynamic data collection and analysis
- Hydrodynamic model verification using new field data
- Reporting

Details regarding each of these components of the study plan will be addressed below. The expected duration of the hydrodynamic study is approximately three years. Assuming a starting date of October 1, 2011, the study plan is projected to be completed by December 31, 2014. Upon completion of the study, a detailed study report will be submitted to the Florida Department of Environmental Protection for review to ensure that the National Pollutant Discharge Elimination System (NPDES) and Environmental Resource Permit requirements are met. The report will also be submitted for review by U.S. Army Corps of Engineers and other permitting and review agencies, as required.

Hydrodynamic model simulation.

The hydrodynamic model simulation will be used to help identify the ideal location for the desalination plant that minimizes both cost and environmental impact. For this study the most direct effluent is concentrated salt brine, which is more saline than the marine environment and can therefore lead to environmental problems. The hydrodynamics of the effluent is generally separated into two regions, the near field (mixing zone) and far field (see, e.g., Marti et al. 2011). Task 1A addresses the far field simulation, while the near field simulation is addressed in Task 1B. The hydrodynamic model simulation should be able to answer the question as to whether it is feasible to use the proposed study sites shown in Figure 1. By calculating the size of mixing zone under a variety of meteorological conditions and discharge conditions, we will be able to decide if the proposed sites (~10-15 m depth) are feasible or need to be moved to different locations.

Far-field circulation and wave simulation

To examine the large scale hydrodynamics in the vicinity of the Project, the Curvilinear-grid Hydrodynamics in 3D (CH3D) model will be used (Sheng 1987, 1990; Sheng et al. 2010; Tutak and Sheng, 2011). The CH3D model uses a horizontally boundary-fitted curvilinear grid and a vertical terrain-following sigma grid to enable accurate resolution of the complex geometry and bathymetry of estuaries. Moreover, CH3D contains a robust turbulence closure model (Sheng and Villaret 1989) for vertical turbulent mixing and a Smagorinski-type model for horizontal turbulent mixing. CH3D can be used to calculate the circulation driven by tides, winds, density gradients, and waves. In addition, the model can allow flooding-and-drying (Davis and Sheng 2003; Sheng et al. 2010) and accept large-scale and hurricane-scale winds and precipitation to calculate storm surge and coastal inundation. CH3D was successfully used to simulate the storm surge and salinity dynamics in the NE Florida coast during Tropical Storm Fay in 2008 (Sheng and Paramygin 2010). Tutak and Sheng (2011a) successfully simulated the residual circulation and salinity dynamics in Guana-Tolomato-Matanzas National Estuarine Research Reserve (GTMNERR) during Tropical Storm Fay and Hanna in 2008.

For this study, a detailed CH3D model domain has been developed (Figure 2). This domain stretches from Ponte Vedra Beach in the north to New Smyrna Beach in the south and approximately 30 km offshore. The model and model domain has been used in previous studies by Tutak and Sheng (2011a and b). These studies investigated the effects of tropical cyclones on the residual circulation and salinity dynamics within the GTMNERR. In these studies the hydrodynamic response within GTMNERR estuaries to the 2004 (Charley, Frances, Jeanne, and Ivan) and 2008 (Fay and Hanna) hurricanes are successfully simulated. This study will expand the scope of the Tutak and Sheng studies by focusing on the hydrodynamics and salinity in the coastal waters, particularly those inside the black box in Figure 1, during hurricanes as well as non-hurricane conditions.

In order to accurately simulate the near-shore hydrodynamics in the CH3D domain, accurate boundary and forcing conditions must be described. The boundary conditions can be obtained from the Hybrid Coordinate Ocean Model (HYCOM). A plot of the HYCOM/CH3D bathymetry in the vicinity of the study location is shown in Figure 3. HYCOM is a primitive equation ocean general circulation model (Halliwell et al., 1998, 2000; Bleck, 2002) that uses a hybrid vertical coordinate grid (Bleck and Benjamin, 1993). It is a result of joint efforts between the University of Miami, the Los Alamos National Laboratory, and the Naval Research Laboratory (NRL). HYCOM has been designed to work as a global/regional scale model; therefore, its schemes, parameterizations and boundary conditions are targeted towards that and assume relatively low resolution computational domain, which makes the model useful as a large-scale model in a “nested grid” that would provide boundary conditions to a finer-scale model such as CH3D. Water level and salinity data along the open boundary of CH3D will be obtained from HYCOM simulations. The tidal harmonic constituents for tidal boundaries will be obtained from the ADCIRC tidal database for the East Coast (Mukai et al. 2001). Atmospheric pressure and wind data during non-storm periods can be obtained from the NOGAPS model output, while those during storm periods can be obtained from a combination of winds from the National Oceanic

and Atmospheric Administration (NOAA) Hurricane Research Division's (HRD) 10-m Reanalysis H*Wind (Powell et al. 1998) and atmospheric pressure from Holland (Holland 1980) analytical model. Observed daily precipitation data available at several stations will be interpolated onto the model grid. To account for nearshore waves, SWAN (Simulating Waves Nearshore, Booji et al. 1999; Ris et al. 1999) will be dynamically coupled with CH3D. Simulations for the 2004 and/or 2008 periods will be performed to evaluate the coastal hydrodynamics near the proposed study location and aid in the placement of field instrumentation.

Near-field dilution/mixing simulation.

Using the 2004/2008 far-field circulation simulated in the previous Section, we will simulate the near-field dilution and mixing of concentrated brine discharged from the ocean bottom at the proposed site. The near field is defined as the region where the initial jet momentum and or the initial buoyancy flux drive the jet turbulence and the entrainment (Marti et al. 2011). This is demonstrated in Figure 4 which depicts the dense plume rising into the ambient fluid as a jet, entraining ambient fluid until it reaches its terminal height, then falling back to the bottom (Marti et al. 2011). Upon impacting the bottom, the plume spreads laterally, further entraining ambient fluid until it reaches the edge of the mixing zone where the flow transitions from laminar to turbulent. The processes within the mixing zone are of a very small scale and non-hydrostatic which eliminates the use of a traditional 3D circulation model. This study will use a non-hydrostatic version of CH3D to model the dynamics within the mixing zone. By using the non-hydrostatic version of CH3D for the near-field, coupling with the far field CH3D model can be readily obtained so that accurate hydrodynamics information can be passed between the two.

The mixing zone in coastal waters is defined to be 125,600 m² in coastal waters, according to FDEP. This equates to approximately a 350 by 350 m area. The near-field CH3D model domain will cover the entire mixing zone and ~ 1000 by 1000 m with 1-10 m resolution in the horizontal. The vertical resolution must also be very fine in the mixing zone. Following works by Hodges et al. (2006) and others, the vertical resolution needs to be on the order of 0.25-1 m to accurately portray the large salinity gradients that may exist.

The near-field mixing model will be run considering a number of brine discharge options. A jet angle of 60° relative to the horizontal has been shown to provide the highest dilution (Zeitoun et al. 1972) and has been adopted as the standard (Pincince and List 1973; Roberts and Toms 1987; Roberts et al. 1997). Recent work (Jirka 2008; Bleninger and Jirka 2008) suggest smaller angles may have design advantages. These various discharge options will be investigated.

Upon completion of the coupled near-field/far-field simulation of the observing period considering various discharge situations conclusions regarding the environmental impact will be made. Further scenario based simulations will be made as needed to asses impacts from different meteorological forcing.

Hydrodynamic data collection and analysis.

In order to identify the ideal location for the Project, a field study will be needed to collect necessary information on the ambient conditions in the coastal zone. The primary purpose is to gather data for model verification. There is an obvious void in necessary data near the proposed project locations. With this in mind a field campaign will be necessary to collect and analyze current, salinity, temperature, wave, wind, water level, suspended sediment concentration, turbidity, and bottom sediment type and composition data. The northeast Florida coast is subject to a variety of weather conditions including tropical storms and Nor'easters as well as seasonal and diurnal variability. In addition the hydrodynamic conditions can vary with the weather and due to tidal influence and high waves from nearby or distant storms among other things. These various conditions can lead to abrupt changes in the stratification of the coastal zone, which can inhibit vertical mixing of brine discharges. Strong winds and waves can lead to significant scouring of the ocean bottom and cause adverse effect on the discharge pipes. Considering the changing meteorological and hydrodynamic conditions along the coast, the field campaign will need to last a minimum of 12 months to account for the temporal and spatial variability in the flow and mixing patterns in the study area.

The field study will collect data at 2 – 5 sites (inside the black box shown in Figure 1) in approximately 10-15 m of water depth on lines running perpendicular to the coast from the proposed project locations. For these long duration measurements three main instruments will be used. To measure water velocities a bottom moored acoustic Doppler current profiler (ADCP) will be utilized. The ADCP will be mounted to a stationary tripod on the seabed in an upward looking orientation. The ADCP can be configured to an appropriate (~0.25 m) vertical cell size so that high resolution current data is available. A moored station consisting of a full meteorological station and a set of underwater sensors will be placed near the ADCP. The moored station will collect meteorological data including wind speed and direction as well as air temperature and humidity. The underwater sensors will provide information on water temperature, water depth, and conductivity. Water temperature and conductivity can be measured at locations throughout the water column to provide information on the stratification of the column. Water depth information can be used to derive estimates of the water level due to tidal or meteorological forcing. Wave data will be collected by the ADCP, while a bottom mounted pressure sensor will be installed as well.

In addition to the fixed sampling stations, additional field studies will be necessary to provide higher spatial resolution data. These studies will typically last 12.5 hours (a full tidal cycle) and consist of measurements of conductivity, temperature and depth using a fine-scale profiler. Transects will be run throughout the study domain to obtain higher spatial resolution than the fixed measurements can provide. The continually recording fixed mounted data, combined with the boat collected data will be analyzed and used for validation of the numerical model simulation.

Sediment will be collected as part of the field program. The bed composition will be determined and this information will be combined with the numerical model results to determine if scouring

will occur around the discharge pipe. The scouring may affect the foundation of the discharge pipe as well as disrupt navigation in the area.

The ADCP will collect backscatter data which can be used as an estimate of turbidity within the water column. By analyzing the ADCP data and taking into account the sediment type and numerical model results a determination of whether high turbidity conditions may occur will be made.

The primary purpose of the field work is to gather data to provide basic understanding on the hydrodynamic conditions in the proposed site area inside the black box in Figure 1 and to provide data for model verification. In order to minimize the cost of field studies, it is prudent to start with model simulations first, to derive guidelines for site selection. The hydrodynamic model used for this study has been validated with data from many coastal and estuarine environments, hence is expected to be fairly accurate. After the new field work is conducted, the hydrodynamic model can then be validated using the new hydrodynamic data.

Model verification using the new field data.

Upon completion of the field campaign, and analysis of the measured data, the data will be used for validation of the far field model. The model simulated flow and salinity fields will be compared with the observations obtained in the field. The model verification will provide confidence that the model simulation conducted in Task 1 is reliable and accurate. We will use the coupled far-field and near-field model to simulate the flow and mixing during the measurement period as well.

Reporting.

Progress of this study will be reported quarterly, biannually, and annually. A detailed final report will be produced at the end of the study and submitted to FDEP and other permitting and review agencies.

Summary

The study plan presented will provide robust answers to the concerns regarding environmental impact of the Coquina Coast Desalination Plant. It will identify the optimal locations for the brine discharge to be released into the ambient environment.

References

- Bleck, R., 2002: An oceanic general circulation model framed in hybrid isopycnic- Cartesian coordinates. *Ocean Modeling*, **4**, 55-88.
- Bleck, R., and S. Benjamin, 1993: Regional weather prediction with a model combining terrain following and isentropic coordinates, Part I: Model Description. *Mon. Wea. Rev.*, **121**, 1770-1785.
- Bleninger, T., and G. Jirka, 2008: Modelling and environmentally sound management of brine discharges from desalination plants. *Desalination*, **221**, 585–597.
- Booij, N., R. C. Ris, and L. H. Holthuijsen 1999: A third-generation wave model for coastal regions: 1. Model description and validation. *J. Geophys. Res.*, **104**(C4), 7649-7666.
- Davis, J. R., and Y. P. Sheng, 2003: Development of a parallel storm surge model. *Int. J. Numer. Meth. Fluids.*, **42**, 549-580.
- Florida Department of Environmental Protection, 2010: Desalination in Florida: Technology, Implementation, and Environmental Issues. Division of Water Resource Management, FDEP. 109pp.
- Halliwel Jr., G. R., Bleck, R., and E. Chassignet, 1998: Atlantic ocean simulations performed using a new Hybrid Coordinate Ocean Model (HYCOM). *EOS*, Fall AGU Meeting.
- Halliwel Jr., G. R., Bleck, R., Chassignet, E. P., and L. T. Smith, 2000: Mixed layer model validation in Atlantic Ocean simulations using the Hybrid Ocean Model (HYCOM). *EOS*, **80**, OS304.
- Hodges, D. R., Kulis, P. S., and C. H. David, 2006: Desalination brine discharge model final report. Center for Research in Water Resources, University of Texas at Austin, 205 pp.
- Holland, G. J., 1980: An analytic model of the wind and pressure profiles in hurricanes. *Mon. Weather Rev.*, **108**, 1212-1218.
- Jirka, G., 2008: Improved discharge configuration for brine effluents from desalination plants. *J. Hydraul. Eng.*, **134**(1), 116–120.
- Marti, C. L., Antenucci, J. P., Luketina, D., Okely, P., and J. Imberger, 2011: Near-field dilution characteristics of a negatively buoyant hypersaline jet generated by a desalination plant. *J. Hydraul. Eng.*, **137**(1), 57-65.
- Mukai, A. Y., J. J. Westerink, and R. A. Luettich, 2002: Guidelines for using the Eastcoast 2001 database of tidal constituents within the western North Atlantic Ocean, Gulf of Mexico and Caribbean Sea, Coastal and Hydraulics Technical Note CERD. Vicksburg, Virginia: US Army Corps of Engineers, ERDC/CHL CHETN-IV-40, 20

- Pincince, A. B., and E. J. List, 1973: Disposal of brine into an estuary. *J. Water Pollut. Control Fed.*, **45**, 2335–2344.
- Ris R. C., N. Booij, and L. H. Holthuijsen, 1999: A third-generation wave model for coastal regions, Part II, Verification. *J. Geophys. Res.*, **104**(C4), 7667-7681.
- Roberts, P. J. W., Ferrier, A., and G. Daviero, 1997: Mixing in inclined dense jets. *J. Hydraul. Eng.*, **123**(8), 693–699.
- Roberts, P. J. W., and G. Toms, 1987: Inclined dense jets in flowing current. *J. Hydraul. Eng.*, **113**(3), 323–341.
- Sheng, Y. P., 1987: On modeling three-dimensional estuarine and marine hydrodynamics. *Three-dimensional models of marine and estuarine dynamics*, (Ed: J.C.J. Nihoul), Elsevier, 35-54.
- Sheng, Y. P., and C. Villaret, 1989: Modeling the effect of suspended sediment stratification on bottom exchange processes. *J. Geophys. Res.*, **94**, 14429-14444.
- Sheng, Y. P., 1990: Evolution of a Three-Dimensional Curvilinear-Grid Hydrodynamic Model for Estuaries, Lakes, and Coastal Waters: CH3D. *Estuarine and Coastal Modeling I*, **ASCE**, 40-49.
- Sheng, Y. P., B. Tutak, V. A. Paramygin, and J. R. Davis, 2008: Circulation and Flushing in the Lagoonal system of Guana-Tolomato-Matanzas National Estuarine Research Reserve, Florida, *Journal of Coastal Research*, 55, pp. 9-25.
- Sheng, Y. P., V. Alymov, and V. A. Paramygin, 2010: Simulation of storm surge, wave, currents, and inundation in the Outer Banks and Chesapeake Bay during Hurricane Isabel in 2003: The importance of waves, *J. Geophys. Res.*, 115, C04008.
- Sheng, Y. P. and V. A. Paramygin, 2010: Forecasting Storm Surge, Inundation, and 3D Circulation along the Florida Coast, *Estuarine and Coastal Modeling*, 11, ASCE, pp.744-761, 2010.
- Tutak, B. and Y. P. Sheng, 2011a: Effect of tropical cyclones on residual circulation and momentum balance in a subtropical estuary and inlet: Observation and simulation, *J. Geophys. Res.*, 116, C06014, doi:10.1029/2011JC006988.
- Tutak, B. and Y. P. Sheng, 2011b: Effect of tropical cyclones on residual circulation and momentum balance in a subtropical estuary and inlet during 2004, to be submitted.
- Zeitoun, M. A., Reid, R. O., McHilhenny, W. F., and T. M. Mitchell, 1972: Model studies of outfall systems for desalination plants. Part III. Numerical simulations and design considerations. *Research and Development Progress Rep. No. 804*, Office of Saline Water, U.S. Dept. of Interior, Washington, D.C.

Figures

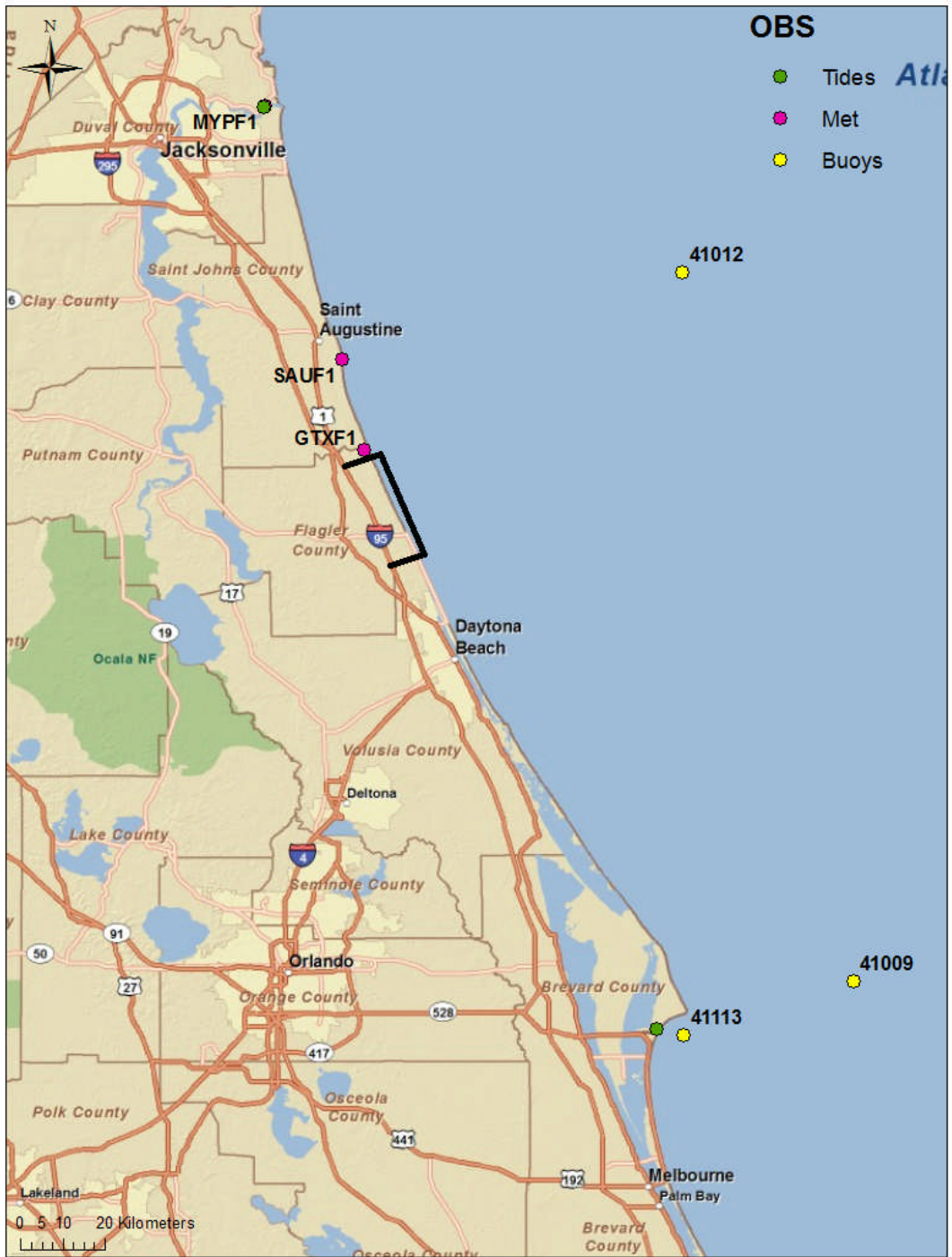


Figure 1: Locations of available data sources in relation to the study area for the Coquina Coast Desalination Project (Black Lines)

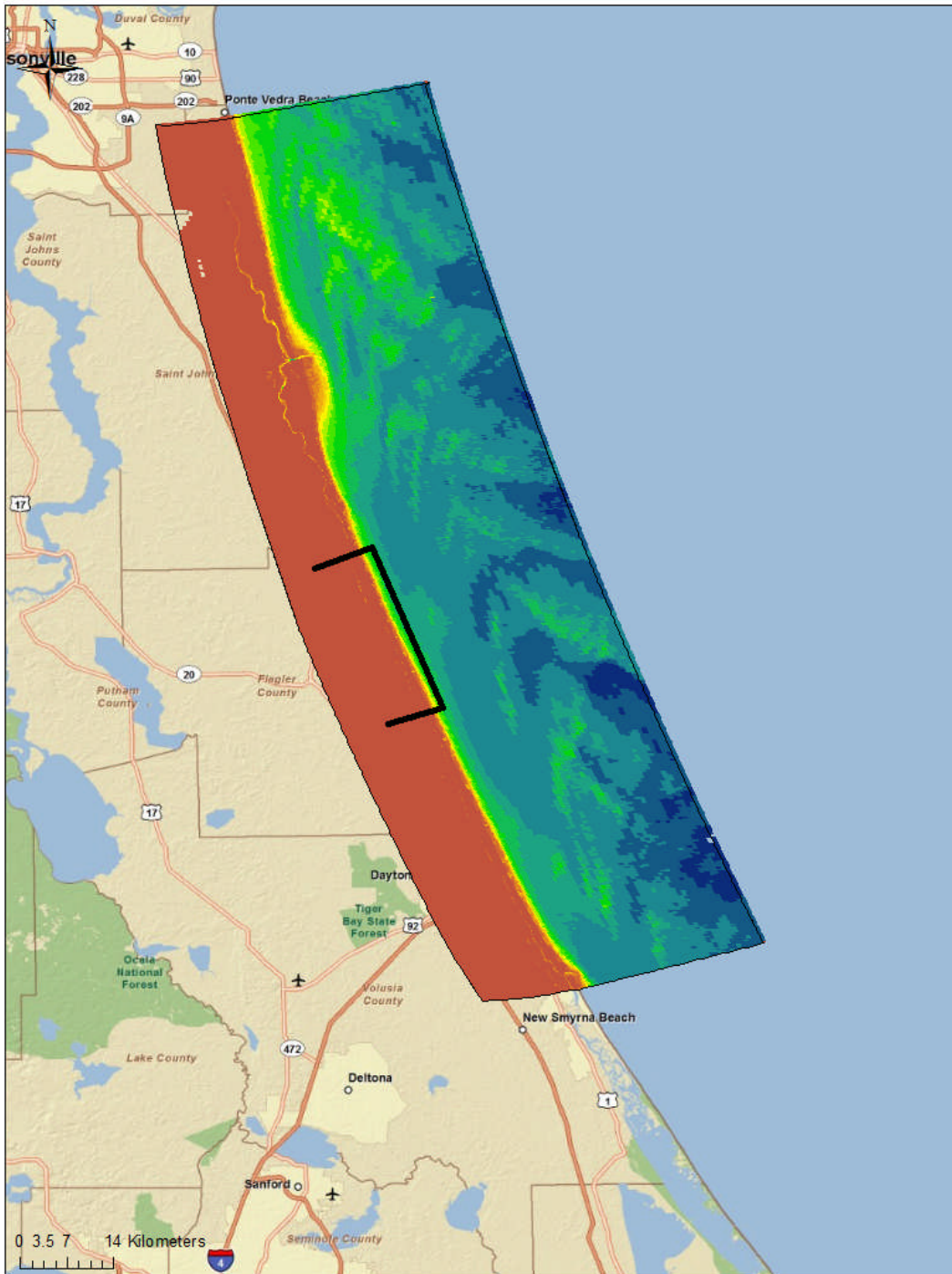


Figure 2: CH3D model domain with site location outlined in black lines

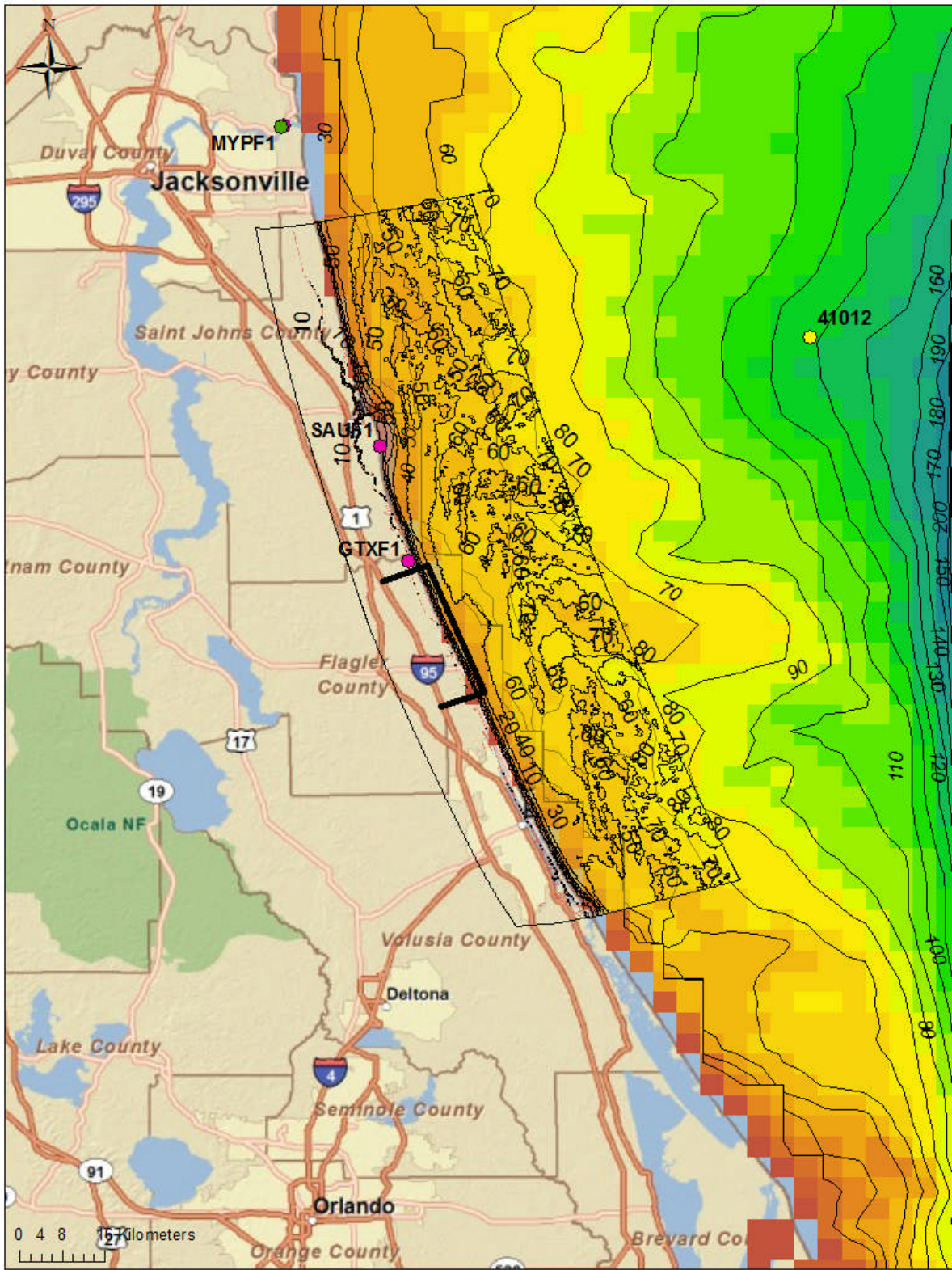


Figure 3: CH3D and HYCOM model bathymetry (ft) in the area near the proposed Project locations

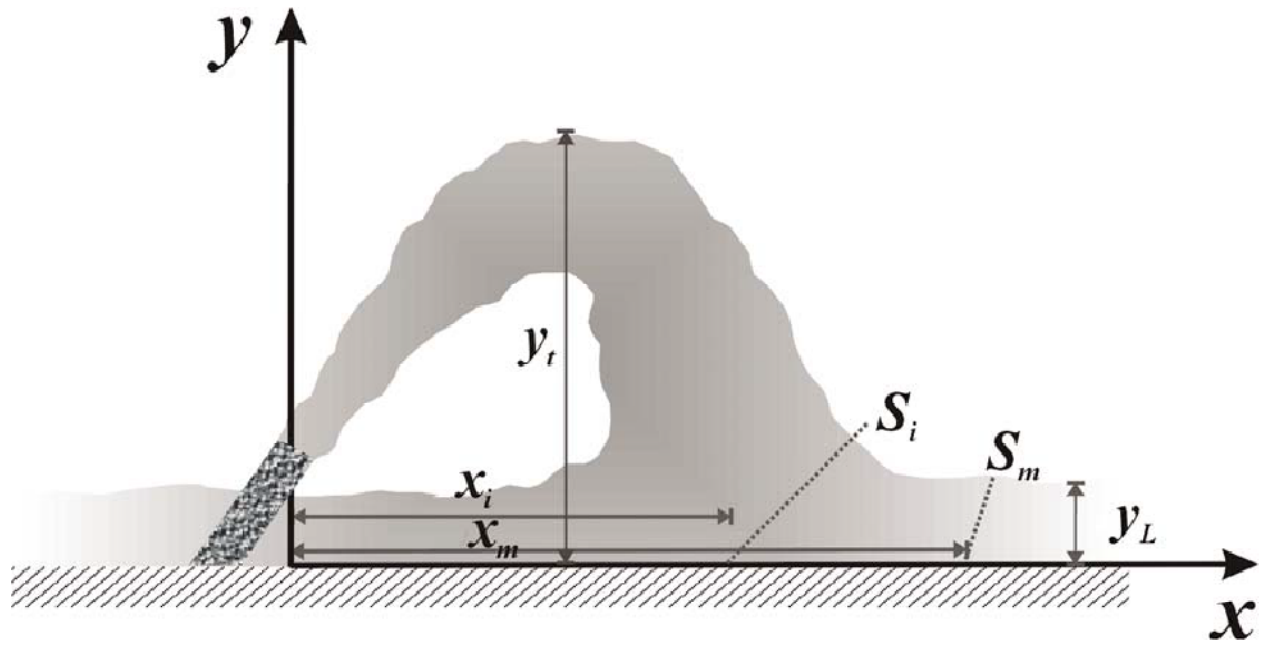


Figure 4: Definition sketch for an inclined dense jet based (from Marti et al. 2011). The terminal height of rise of the jet (y_t), the height of the bottom layer (y_L), the distance of the impact point (x_i), the distance of the edge of the mixing zone (x_m), the dilution at the impact point (S_i), and the dilution at the edge of the mixing zone (S_m) are depicted.



coquina coast

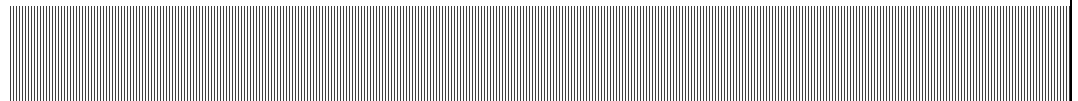
seawater desalination project

Phase 2A Project Report

APPENDIX

I

Marine Ecology Database Summary



Coquina Coast Sea Water Desalination Plant Project

Biological Inventory

Interim Report

by

Peter A. Anderson
Whitney Laboratory for Marine Bioscience
University of Florida

The salt water concentrate (brine) that would be discharged into the ocean as a by-product of the operations of the proposed Coquina Coast Salt Water Desalination plant has the potential to negatively impact marine life in the vicinity of that discharge. The extent of that impact will be determined by a variety of factors, including the volume of brine discharged, and the extent and speed with which the brine is diluted and dispersed by mixing with ambient sea water. These factors will be assessed during the permitting process for the project.

An additional and important consideration, and one that will feature heavily in the permitting process, is the nature of the marine life that would be exposed to the brine and, in particular, the presence of species of concern, including threatened and endangered species that might encounter and potentially be harmed by the brine prior to its dispersion. The following is a preliminary biological inventory of the marine life present in waters off-shore of St. Johns, Flagler and Volusia Counties, Florida, the three county region in which the desalination plant would be located.

This inventory was obtained through an *in-silico* analysis of nine independent databases (Appendix 1). The geographical regions covered by these databases typically greatly exceeded the three county Coquina Coast region but by working with species-specific maps in each database, only organisms reported to be present in this specific area were included in the database. The criteria used to identify species present in the three county Coquina Coast region were as follows:

1. At least one stage in an organisms life cycle must be included in at least one database for the region.
2. It must be a marine species that lives an aquatic existence (birds have been excluded).
3. It cannot be an obligate brackish water species (i.e. one that cannot tolerate full strength sea water) that would not be found off-shore at any stage of its life-cycle.

The study identified a total of 1045 unique species (Appendix 2) that can be found at some stage in their life cycle in the ocean off the three county region. All are animals species. Of these, two are listed as threatened, nine are species of concern, 11 are listed as endangered and a further three have been proposed for Endangered Species Act listing. No marine plants are recognized as being located in the three county region: Johnson's sea grass, a major species of concern, is not reported to be present north of Brevard County.

APPENDIX 1.

Databases used to compile this report

1. Fishbase.org
2. The Florida Museum of Natural History Collection Databases: Ichthyology, and Invertebrate Zoology & Malacology
3. The Whitney Laboratory for Marine Bioscience: Matanzas Basin Biodiversity Initiative Species List
4. Florida Fish and Wildlife Conservation Commission
5. U.S. Geological Survey: Nonindigenous Aquatic Species
6. Gray's Reef National Marine Sanctuary (and Georgia Southern University): A Guide to the Benthic Invertebrates and Cryptic Fishes of Gray's Reef
7. FishNet 2 - Informatics, Biodiversity Research Center, University of Kansas
8. Florida Natural Areas Inventory
9. National Ocean Service, part of the National Oceanic and Atmospheric Administration (www.nos.noaa.gov)

APPENDIX 2

Species Summary

Total Unique Species: 1045

Annelida:	6 species; 0 threatened
Arthropoda:	57 species 0 threatened
Bryozoa:	16 species 0 threatened
Chordata:	788 species 1 threatened 9 species of concern 11 endangered
Cnidaria:	49 species 0 threatened
Echinodermata:	25 species 0 threatened
Mollusca:	45 species 1 threatened
Platyhelminthes:	2 species 0 threatened
Porifera:	50 species 0 threatened
Threatened species:	Florida Rainbow (bivalve mollusc) Loggerhead Turtle
Species of Concern:	Atlantic Sturgeon Blueback Herring Common Snook Dusky Shark Mangrove Rivulus Opossum Pipefish Saltmarsh Topminnow Sand Tiger Shark Speckled Hind (aka Calico Grouper)
Endangered Species:	Bottlenose Dolphin Goliath Grouper Green Turtle Hawksbill Turtle

Humpback Whale
Kemp's Ridley Turtle
Leatherback Turtle
Manatee
North Atlantic Right Whale
Shortnose Sturgeon
Smalltooth Sawfish

Proposed for ESA listing: Atlantic Sturgeon
Largetooth Sawfish,
Loggerhead Turtle

25 Vertebrate species that are unlikely to survive in hyper-saline environments:

American Gizzard Shad, American Pickerel, Atlantic Sturgeon*, Bay Anchovy, Blueback Herring, Bluegill, Bonefish, Common Snook, Fantail Mullet, Fat Snook, Gulf Killifish, Hardhead Catfish, Inland silverside, Marsh Killifish, Mountain Mullet, Opossum Pipefish, Pinfish, Sailfin Molly, Silver Perch, Slashcheek Goby, Striped Bass, Striped Mullet, Tarpon Snook, Threadfin Shad, White Mullet

Coquina Coast
Biological Inventory - Flora

Common Name	Scientific Name	Range of Habitat	Notes
Sargassum	<i>Sargassum muticum</i>		
Turtle Grass	<i>Thalassia testudinum</i>	Just north of Sebastian Inlet, FL to the Bahamas	Can withstand salinities up to 60 psu
Manatee Grass	<i>Syringodium filiforme</i>	Off coast of Brevard County, and South Florida coast	
Shoal Grass	<i>Halodule wrightii</i>	Atlantic coast of FL and keys (not north of Flagler)	Can withstand salinities up to 65 psu
Johnson's seagrass	<i>Halophila johnsonii</i>	Brevard County line and south	Tolerates higher salinities better than hyposalinities; "... <i>H. johnsonii</i> could be seriously affected by salinity alterations produced by human activities, such as freshwater management or the brine discharge from seawater desalination plants."
Paddle weed	<i>Halophila ovalis</i>	east coast of florida	
Paddle grass	<i>Halophila decipiens</i>	Found in meadows along the southern FL coast (Brevard south)	
Star grass	<i>Halophila engelmanni</i>	Atlantic coast of FL starting at Brevard	
Widgeon grass	<i>Ruppia maritima</i>	Off the coast of Duval, Brevard, Indian River and South FL	Can withstand salinities up to 55 psu
Sargassum weed	<i>Sargassum filipendula</i>	grows subtidally and they attach to coral, rocks, or shells in sheltered areas	
Eelgrass (tapegrass)	<i>Vallisneria americana</i>		
Sea Oats	<i>Uniola paniculata</i>		
Bitter Panicgrass	<i>Panicum amarum</i>		
Beach Elder	<i>Iva imbricata</i>		
Dune Sunflower	<i>Helianthus debilis</i>		
Gulf Croton	<i>Croton punctatus</i>		
Camphorweed	<i>Heterotheca subaxillaris</i>		
Tallow Wood	<i>Ximenia americana</i>		
Tough Bully	<i>Sideroxylon tenax</i>		
Red Bay	<i>Persea borbonia</i>		
Southern Magnolia	<i>Magnolia grandiflora</i>		
Water Naiad	<i>Najas guadelupensis</i>		
Algae	<i>Botryocladia occidentalis</i>		
Algae	<i>Rhodymenia pseudopalmata</i>		
Algae	<i>Dudresnaya georgiana</i>		
Algae	<i>Dudresnaya puertoricensis</i>		
Algae	<i>Schizothrix mexicana</i>	Commonly grows as an epiphyte on other algae and invertebrates and on rock surfaces	Cyanophyta

Coquina Coast
Biological Inventory - Flora

Common Name	Scientific Name	Range of Habitat	Notes
Algae	<i>Cladophora dalmatica</i>		
Algae	<i>Cladophora laetevirens</i>		
Algae	<i>Cladophora pellucidoidea</i>		
Algae	<i>Bryopsis pennata</i>		
Algae	<i>Derbesia marina</i>		
Algae	<i>Derbesia turbinata</i>		
Algae	<i>Boodleopsis pusilla</i>		
Algae	<i>Codium isthmocladum</i>		
Algae	<i>Caulerpa mexicana</i>		
Algae	<i>Giffordia mitchellae</i>		
Algae	<i>Giffordia onslowensis</i>		
Algae	<i>Onslowia endophytica</i>		
Algae	<i>Dictyota dichotoma</i>		
Algae	<i>Spatoglossum schroederi</i>		
Algae	<i>Dictyopteris hoytii</i>		
Algae	<i>Rosenvingia intricata</i>		
Algae	<i>Colpomenia sinuosa</i>		
Algae	<i>Stylonema alsidii</i>		
Algae	<i>Erythrocladia irregularis</i>		
Algae	<i>Erythrotrichia carnea</i>		
Algae	<i>Audouinella bispora</i>		
Algae	<i>Audouinella hoytii</i>		
Algae	<i>Audouinella ophioglossa</i>		
Algae	<i>Scinaia complanata</i>		
Algae	<i>Falkenbergia hillebrandii</i>		
Algae	<i>Dudresnaya crassa</i>		
Algae	<i>Halymenia agardhii</i>		
Algae	<i>Halymenia floridana</i>		
Algae	<i>Halymenia hancockii</i>		
Algae	<i>Predaea feldmanii</i>		
Algae	<i>Soliera filiformis</i>		
Algae	<i>Sebdenis polydactyla</i>		
Algae	<i>Gracilaria blodgettii</i>		
Algae	<i>Gracilaria mammillaris</i>		
Algae	<i>Fosliella farinosa</i>		
Algae	<i>Botryocladia wynnei</i>		
Algae	<i>Champia parvula</i>		
Algae	<i>Lomentaria baileyana</i>		

Coquina Coast
Biological Inventory - Flora

Common Name	Scientific Name	Range of Habitat	Notes
Algae	<i>Callithamnion halliae</i>		
Algae	<i>Antithamnionella breviramosa</i>		
Algae	<i>Antithamnionella spirographidis</i>		
Algae	<i>Ceramium fastigiatum</i>		
Algae	<i>Spyridea hypnoides</i>		
Algae	<i>Plenosporium boergesenii</i>		
Algae	<i>Anotrichium tenue</i>		
Algae	<i>Griffithsia gobulifera</i>		
Algae	<i>Branchioglossum minutum</i>		
Algae	<i>Hypoglossum hyposlossoides</i>		
Algae	<i>Grinnellia americana</i>		
Algae	<i>Haraldia prostrata</i>		
Algae	<i>Dasya baillouviana</i>		
Algae	<i>Dipterosiphonia reversa</i>		
Algae	<i>Polysiphonia denudata</i>		
Algae	<i>Polysiphonia atlantica</i>		
Algae	<i>Chondria polyrhiza</i>		

Source: Whitney Laboratory for Marine Bioscience, Univ. of Florida

Legend

Species of Concern	
Threatened	
Endangered	
Depleted	

Coquina Coast
Biological Inventory - Fauna

Common Name	Scientific Name	Habitat	Depth Range (m)	Salinity
a lace sponge	<i>Clathrina coriacea</i>	Tropical and temperate reefs; attach to the undersides of large sponges, rock slabs, and corals		marine
Bread Crumb Sponge	<i>Halichondria bowerbanki</i>	Tropical and temperate reefs	to 40m	marine
Brown Fan Sponge	<i>Clathria carteri</i>	Mixed sandy and hard bottom habitats	to 70m	marine
Brown Finger Sponge	<i>Axinella pomponiae</i>	Temperate reefs	to 50m	marine
Butternut Sponge	<i>Chondrosia reniformis</i>	Inhabit ledges, rocky outcroppings, crevices, coral reefs, mangroves & seagrass beds		marine
caribbean marine sponge	<i>Axinyssa ambrosia</i>	On mixed sandy bottoms surrounding reefs		marine
Chicken Liver Sponge	<i>Chondrilla nucula</i>	Inhabit ledges, rocky outcroppings, crevices, coral reefs, mangroves & seagrass beds		marine
Cliona viridis	<i>Cliona viridis</i>	Bore into rocks & shells in areas of mixed sandy & rocky bottoms	to 30m	marine
Club Finger Sponge	<i>Haliclona oculata</i>	demersal; stones and rocks	to 300ft	marine
Corrugated Sponge	<i>Higginsia strigilata</i>	Mixed sandy and hard bottom habitats	to 70m	marine
denderoceratid sponge	<i>Igernella notabilis</i>	Tropical & temperate reefs & artificial structures or wrecks	to 70m	marine
Encrusting Orange Sponge	<i>Spirastrella coccinea</i>	Encrust rock surfaces, corals, and other hard substrates	to 30m	marine
Encrusting Orange Sponge	<i>Spirastrella mollis</i>	Common under rocks of reef environments	to 5m	marine
Endectyon multidentatum	<i>Hemectyon pearsei</i>	attach to rocks or within crevices of reef		marine
Etherial Sponge	<i>Dysidea etheria</i>	Tropical and temperate reefs	to 40m	marine
Green Boring sponge	<i>Cliona caribbea</i>	Temperate reefs	to 50m	marine
Loggerhead Sponge	<i>Spheciospongia vesparium</i>	shallow reefs and sandy bottoms	15-60ft	marine
Myriastra fibrosa	<i>Myriastra fibrosa</i>	Encrust temperate and tropical reefs	to 30m	marine
Orange Colonial Sponge	<i>Lissodendoryx sigmata</i>	Mixed sandy and hard bottom habitats	to 30m	marine
Orange Fan Sponge	<i>Axinella bookhouti</i>	Temperate reefs	to 50m	marine
Orange Lumpy Encrusting Sponge	<i>Scopalina ruetzleri</i>	Shallow inshore habitats such as mangrove roots and patch reefs; also tropical and temperate reefs and wrecks	to 30m	marine
Purple Cavern Sponge	<i>Hyrtios violaceus</i>	Temperate Reefs	to 30m	marine
Raspailia	<i>Raspailia sp.</i>	Mixed sandy and hard bottom habitats	to 30m	marine
Red beard sponge	<i>Microciona prolifera</i>	Ocean floor		marine
Red Beard Sponge	<i>Clathria prolifera</i>	Tropical and temperate reefs	to 40m	marine
Red Branching Sponge	<i>Ptilocaulis walpersi</i>	Tropical and temperate reefs	to 40m	marine
Red Devil's Finger	<i>Axinella polycapella</i>	temperate reefs	to 50m	marine
Rhaphidophlus junipera	<i>Rhaphidophlus junipera</i>	Tropical and temperate reefs	to 40m	marine
Scattered Pore Rope Sponge	<i>Aplysina fulva</i>	Tropical and temperate reefs	to 40m	marine
Scypha barbadensis	<i>Scypha barbadensis</i>	Attaches to rocks, shells, hydroids, and bryozoans		marine

Coquina Coast
Biological Inventory - Fauna

Common Name	Scientific Name	Habitat	Depth Range (m)	Salinity
Smenospongia cerebriformis	<i>Smenospongia cerebriformis</i>	Tropical and temperate reefs	to 40m	marine
sponge	<i>Chondrosia collectrix</i>	Inhabit ledges, rocky outcroppings, crevices, coral reefs, mangroves & seagrass beds		marine
Sponge	<i>Cinachyrella kuekenthali</i>	demersal; areas of mixed sand and rocky substrate surrounding tropical and temperate reefs	to 40m	marine
Sponge	<i>Ciocalypta gibbsi</i>	Mixed sand and hard bottom habitats	to 70m	marine
Stelletta carolinensis	<i>Stelletta carolinensis</i>	Attach to underside of reefs	to 30m	marine
Stinker Sponge	<i>Ircinia fasciculata</i>	Tropical and temperate reefs	to 40m	marine
Stinker Sponge	<i>Ircinia felix</i>	Tropical and temperate reefs	to 40m	marine
Stinker Sponge	<i>Ircinia variabilis</i>	Tropical and temperate reefs	to 40m	marine
Sun sponge	<i>Hymeniacidon heliophila</i>	Ocean floor		marine
Variable Sponge	<i>Cliona varians</i>	Temperate and tropical reefs, seagrass beds and lagoons, and mangrove roots	shallow to 30m	marine
Vase Sponge	<i>Ircinia campana</i>	rocks, reefs	to 40m	marine
White Encrusting Sponge	<i>Geodia gibberosa</i>	Encrust underside of ledges, rocky outcroppings, crevices, and coral reefs	to 50m	marine
White Glove Sponge	<i>Spongia graminea</i>	Attach to underside of reefs	to 30m	marine
White Mound Sponge	<i>Coscinoderma lanuga</i>	Grow on the tops of ledges and rocky outcroppings	to 30m	marine
Yellow and Green Tube Sponge	<i>Aiolochoira crassa</i>	Tropical and temperate reefs	to 40m	marine
Yellow boring sponge	<i>Cliona celata</i>	Ocean floor		marine
Yellow Boring Sponge	<i>Cliona celata</i>	Temperate reefs	to 50m	marine
Yellow Fan Sponge	<i>Axinella waltonsmithi</i>	Temperate reefs	to 50m	marine
Yellow Golf Ball Sponge	<i>Cinachyrella alloclada</i>	demersal; areas of mixed sand and rocky substrate surrounding tropical and temperate reefs	to 40m	marine
Yellow Sulfur Sponge	<i>Aplysilla longispina</i>	Encrusts rocks, wrecks, sea whips, & other gorgonians & sponges	to 25m	marine
Comb Jelly	<i>Mnemiopsis leidyi</i>	Western Atlantic coastal waters		marine
Warty Comb Jelly	<i>Mnemiopsis mccradyi</i>	open water, near surface	0-130ft	marine
Aglaophenia trifida	<i>Aglaophenia trifida</i>	attach to hard substrates on tops of ledges and rocks		marine
Bimeria humilis	<i>Bimeria humilis</i>	encrust on limestone reefs and ledges offshore	30m	marine
Bonneviella minor	<i>Scandia mutabilis</i>	Attach directly to sargassum and rocky reefs		marine
Branched Sea Whip	<i>Leptogorgia virgulata</i>	Rock and limestone ledges	10-60ft	marine
Campanularia macroscypha	<i>Campanularia macroscypha</i>	attach to a variety of substrates, including sessile organisms and seaweeds		marine

Coquina Coast
Biological Inventory - Fauna

Common Name	Scientific Name	Habitat	Depth Range (m)	Salinity
Campanulariid hydroid	<i>Clytia gracilis</i>	attach to substrates including pilings, rocks, ledges, and other seaweeds	shallow to deep reefs	marine
Cannonball Jellyfish	<i>Stomolophus meleagris</i>	Warm estuarian waters with average salinity of 33.8 ppt		marine
Carmine Sea Spray	<i>Leptogorgia miniata</i>	Attach to areas of hard bottom mixed with sand	to 30m	marine
Clytia linearis	<i>Clytia linearis</i>	attach to substrates including pilings, rocks, ledges, and other seaweeds	shallow to deep reefs	marine
Colonial Anemone	<i>Epizoanthus sp.</i>	On sponges and hydroids		marine
Common Sea Anemone	<i>Aiptasia sp.</i>	rocks, holes, crevices		marine
Dynamena disticha	<i>Dynamena disticha</i>	Largely epiphytic attaching to other seaweeds, grasses, and algae or ascidians, other hydroids, and sponges	shallow to deep reefs	marine
Dynamena quadridentata	<i>Dynamena quadridentata</i>	Largely epiphytic attaching to other seaweeds, grasses, and algae or ascidians, other hydroids, and sponges	shallow to deep reefs	marine
Feather Hydroid	<i>Pennaria distichia</i>	Colonize hard bottom reefs and rocky outcroppings	to 50m	marine
Golden Zoanthid	<i>Parazoanthus swiftii</i>	Associated with and attaches to a variety of sponges		marine
Hebella dyssymetra	<i>Hebella dyssymetra</i>	Colonize and attach to other hydroids		marine
Hebellopsis scandens	<i>Hebellopsis scandens</i>	Colonize and attach to other hydroids		marine
Hidden Cup Coral	<i>Phyllangia americana</i>	Attach to underside of rocks, ledge overhangs, & cave ceilings	to 30m	marine
Hydrozoa benthonica	<i>Antennella quadriaurita</i>	attach to sargassum and other seaweeds	shallow to 500m	marine
Immortal jellyfish	<i>Turritopsis nutricula</i>	attach to debris & artificial substrates e.g. buoy chains		marine
Ivory Bush Coral	<i>Oculina arbuscula</i>	benthic; Limestone ledges	10-450ft	marine
Knobby Star Coral	<i>Solenastrea hyades</i>	reefs, lagoons, turtle grass beds, and deep reefs	to 20m	marine
Lion's mane medusa	<i>Cyanea capillata</i>	Ocean floor		marine
Long Spiny Sea Rod	<i>Muricea pinnata</i>	Found in clearer water reefs	to 40m	marine
Monostaechas quadridens	<i>Monostaechas quadridens</i>	Attach to rocky substrates and artificial reefs	to 30m	marine
Moon Jelly	<i>Aurelia aurita</i>	Surface waters over reefs	to 20ft	marine
Obelia dichotoma	<i>Obelia dichotoma</i>	Attach to other hydroids, seaweeds or octocorals	shallow to 20m	marine
Orange cup coral	<i>Tubastraea coccinea</i>	demersal		marine
Orange Spiny Sea Rod	<i>Muricea elongata</i>	Sandy bottoms to sloping rocky substrates & patch reefs	25m	marine
Orange Telesto	<i>Telesto fruticulosa</i>	Colonizes areas of rocky outcroppings and hard bottoms	10-100m	marine
Ostrich Plume Hydroid	<i>Aglaophenia latecarinata</i>	attaches to sargassum and other seaweeds	shallow to 500m	marine
Pinnate Spiny Sea Fan	<i>Muricea pendula</i>	Attach to areas of hard bottom mixed with sand	to 30m	marine
Red Polyp octocoral	<i>Swiftia exserta</i>	Patch reefs, rock or sandy substrates	40-260ft	marine
Red Stickyhydroid	<i>Eudendrium carneum</i>	colonize ledges, rocks, wrecks, pilings and reefs	to 25m	marine
Red Telesto	<i>Telesto sanguinea</i>	Colonize areas of rocky outcroppings and hard bottoms	10-100m	marine
Regal Sea Fan	<i>Leptogorgia hebes</i>	Attach to areas of hard bottom mixed with sand	to 30m	marine

Coquina Coast
Biological Inventory - Fauna

Common Name	Scientific Name	Habitat	Depth Range (m)	Salinity
Sea Fingers	<i>Titanideum frauenfeldii</i>	Current swept areas with hard rocky substrates with sand	15-200m	marine
Sea nettle (Compass Jellyfish)	<i>Chrysaora quinquecirrha</i>	Ocean floor		marine
Sea pansy	<i>Renilla reniformis</i>	Ocean floor		marine
Sertularella conica	<i>Sertularella conica</i>	Attach to rocky substrates and artificial reefs	to 30m	marine
Smooth Flower Coral	<i>Eustimilia fastigiata</i>	Reefs	3-200ft	marine
Snail fur	<i>Hydractinia echinata</i>	Ocean floor		marine
Sponge Zoanthid	<i>Parazoanthus sp.</i>	Attach to a variety of sponges	to 30m	marine
The Sea Whip	<i>Leptogorgia setacea</i>	Attached to rocks & other hard substrates with sand	to 20m	marine
Tridentata marginata	<i>Tridentata marginata</i>	attach to reefs, wrecks, and hard bottoms	surface to 30m	marine
Variegated Feather Duster	<i>Bispira variegata</i>	Reef-associated	25m	marine
White Eye Sea Spray	<i>Thesea nivea</i>	Colonize areas of rocky outcroppings and hard bottoms	20-400m	marine
Bearded Fireworm	<i>Hermodice carunculata</i>	reefs, rubble, seagrass beds	1-130ft	marine
Christmas Tree Worm	<i>Spirobranchus giganteus</i>	reef-associated	to 30m	marine
Mud worm	<i>Polydora cornuta</i>	demersal		marine
Polychaete worm	<i>Hydroides elegans</i>	Utilize substrates including oyster & rock reefs, wood, concrete pilings, aquaculture cages, intake pipes, & vessel hulls		marine
Sea Frost	<i>Filigrana implexa</i>	reef	intertidal to 100m	marine
Spionid worm	<i>Boccardiella ligerica</i>	demersal		marine
Bryozoan	<i>Sundanella sibogae</i>	Seagrasses, drift algae, oyster reef, dock, pilings, breakwaters, and man-made debris		marine
Bugula grayi	<i>Bugula grayi</i>	attach to reefs, wrecks, buoys and floating debris	to 22m	marine
Bugula microoecia	<i>Bugula microoecia</i>	shelly reefs or scallop bed reefs	to 24m	marine
Caulibugula pearsei	<i>Caulibugula pearsei</i>	attach to reefs, wrecks, buoys and floating debris	to 22m	marine
Celeporaria albriostris	<i>Celeporaria albriostris</i>		13-151.5m	marine
Common Sea Mat	<i>Membranipora tenuis</i>	encrust shells and rocks	to 14m	marine
Common sheep's-wool Bryozoan	<i>Amathia convoluta</i>	attaches to rocks, other shells, and mangrove roots	to 30m	marine
Hippoporina contracta	<i>Hippoporina contracta</i>	encrust shells and rocks	to 14m	marine
Jointed Tube Bryozoan	<i>Crisia elongata</i>	reef-associated	40-90ft	marine
Lettuce Bryozoan	<i>Thalamoporella floridana</i>	encrust hard, rocky bottoms, and wrecks		marine
Sauerkraut Bryozoan	<i>Zoobotryon verticillatum</i>	attach to seagrasses, drift algae, oyster reef, docks, etc		marine
Scrupocellaria regularis	<i>Scrupocellaria regularis</i>	attach to seagrasses, mangrove roots, drift algae, oyster reef, docks, etc		marine
Single horn Bryozoan	<i>Schizoporella unicornis</i>	encrusts rocks, shells, pilings, worm tubes, seaweed stalks	shallow water	marine

Coquina Coast
Biological Inventory - Fauna

Common Name	Scientific Name	Habitat	Depth Range (m)	Salinity
Staghorn Bryozoan	<i>Schizoporella floridana</i>	reefs	to 50m	marine
Tubular Horn Bryozoan	<i>Schizoporella violacea</i>	rock, shells, and seaweed (any hard surface)	1-100	marine
Schizoporella cornuta	<i>Schizoporella cornuta</i>	associated with offshore reefs and sea grasses		marine
(Atlantic) Horseshoe crab	<i>Limulus polyphemus</i>	demersal	3-11m	marine
Amphipod	<i>Chelura terebrans</i>	demersal		marine
Barnacle	<i>Balanus calidus</i>	reef-associated, also attach to turtle and mollusk shells		marine
Barnacle	<i>Balanus venustus</i>	demersal		marine
Barnacle	<i>Balanus trigonus</i>	sessile; occurs at low tide mark	3-120	marine
Beaded Hairy Crab	<i>Pilumnus pannosus</i>	reef-associated	to 146m	marine
Blotched Swimming Crab	<i>Portunus spinimanus</i>	reef and sargassum associated	surface to 393m	marine
Blue crabs	<i>Callinectes sapidus</i>	demersal	0-90m (usually 0-35)	marine
Blue-eyed Hermit Crab	<i>Paguristes sericeus</i>	coral rubble and sand	9-145m	marine
Bocourt simming crab	<i>Callinectes bocourti</i>	demersal		marine
Boring Barnacle	<i>Kochlorine floridana</i>	forms chambers in the shells of mollusks, barnacles, etc		marine
Brown rock shrimp	<i>Sicyonia brevirostris</i>	benthic	1-330	marine
Brown Shrimp	<i>Farfantepenaeus aztecus</i>	demersal	0-200 (usually 27-54)	marine
Clear Sponge Shrimp	<i>Periclimenaeus wilsoni</i>	lives with sponges & other snapping shrimps	18-73m	marine
Coarsehand Lady Crab	<i>Ovalipes stephensoni</i>	on or over sandy bottoms; demersal	surface to 227m	marine
Coral Crab	<i>Mithrax hispidus</i>	reef-associated	shallow to 64m	marine
Dark Mantis Shrimp	<i>Neogonodactylus curacaoensis</i>	reef-associated		marine
False Arrow Crab	<i>Metoporphaphis calcarata</i>	Found among hydroids and hard substrates	shallow to 90m	marine
Flamed Box Crab	<i>Calappa flammea</i>	sandy areas	3-45ft	marine
Ghost Crab	<i>Podochela sidneyi</i>	reefs and rocky outcroppings	to 187m	marine
Giant Hermit Crab	<i>Petrochirus diagenes</i>	sand and sea grass, often near reefs		marine
Gnathophyllum modestum	<i>Gnathophyllum modestum</i>	coral-associated	to 27m	marine
Grass Crab	<i>Macrocoeloma trispinosum</i>	associated with seaweeds in harbors	shallow to 82m	marine
Green porcelain crab	<i>Petrolisthes armatus</i>	demersal	shallow to low intertidal habitats	marine
Hairy mud crab	<i>Pilumnus sayi</i>	reef-associated		marine
Iridescent Swimming Crab	<i>Portunus gibbesii</i>	demersal	to 393m	marine
Isopod	<i>Sphaeroma walkeri</i>	demersal	0-5	marine
West Indian Shrimp	<i>Lysmata intermedia</i>	demersal; mainly on grass flats with algae	0-22m	marine
Pink shrimp	<i>Farfantepenaeus duorarum</i>	demersal	0-300 (usually 11-36)	marine
Plumed Hairy Crab	<i>Pilumnus floridanus</i>	sponges and reefs	to 146m	marine

Coquina Coast
Biological Inventory - Fauna

Common Name	Scientific Name	Habitat	Depth Range (m)	Salinity
Porcelain Crab	<i>Petrolisthes galanthinus</i>	under stones and rocks associated with sponges, corals, and anemones.	shallow to 54m	marine
Porcellanid Crab	<i>Megalobrachium soriatum</i>	free living among corals, rocks, and sponges	shallow to 171m	marine
Red Cleaning Shrimp	<i>Lysmata wurdemanni</i>	reef-associated	up to 30m	marine
Red Swimming Crab	<i>Cronius ruber</i>	demersal; around reefs		marine
Redspotted Shrimp	<i>Penaeus brasiliensis</i>	inner oceanic littoral, usually over muddy or sandy bottoms	shallow to 330m	marine
Rough Rubble Crab	<i>Pseudomedeus agassizii</i>	inhabit rock and harbottoms with growths of sponges, tunicates and bryozoans	7.3-82m	marine
Roughneck Shrimp	<i>Trachypenaeus constrictus</i>	demersal	shallow to 84m	marine
Sea Spider	<i>Anoplodactylus lentus</i>	benthic		marine
Sea Whip Barnacle	<i>Conopea galeata</i>	Attach solely to Leptogorgia species		marine
Shaggy Clinging Crab	<i>Mithrax pleuracanthus</i>	reef-associated		marine
Shortspine Hairy Crab	<i>Pilumnus dasypodus</i>	sponges and reefs		marine
Small Hairy Crab	<i>Pilumnus lacteus</i>	demersal	0-165m	marine
Spanish Lobster	<i>Scyllarides aequinoctialis</i>	reefs	30-130ft	marine
Spider Crab	<i>Libinia dubia</i>	demersal	0-46m	marine
Spiny Lobster	<i>Panulirus argus</i>	demersal; near shore off-shore waters	? - 90	marine
Sponge Crab	<i>Hexapanopeus paulensis</i>	reefs	to 30m	marine
Strawberry Crab	<i>Pelia mutica</i>	associated with hydroids, corals, ascidians and sponges on pilings of shelly reefs	shallow to 51m	marine
Striped Barnacle	<i>Balanus reticulatus</i>	demersal		marine
Striped Hermit Crab	<i>Clibanarius vittatus</i>	harbor beaches, borders of mudflats, and rock jetties	0-22m	marine
Striped Snapping Shrimp	<i>Alpheus formosus</i>	reef-associated	to 30m	marine
Titan acorn barnacle	<i>Megabalanus coccopoma</i>	sessile		marine
Velvet Shrimp	<i>Metapenaeopsis goodie</i>	associated with reefs and algae	surface to 329m	marine
White polkadot crab	<i>Porcellana sayana</i>	Found in crevices or clusters of oyster shells	shallow to 92m	marine
White shrimp	<i>Litopenaeus setiferus</i>	demersal	0-100	marine
Wormreef Hermit	<i>Pagurus carolinensis</i>	reef-associated		marine
Yellowline Arrow Crab	<i>Stenorhynchus seticornis</i>	reefs and variety of habitats	10-130ft	marine
Zooplankton	<i>Parapinnixa bouvieri</i>		3.5-7.5m	marine
Mangrove Tunicate Flatworm	<i>Psuedoceros crozieri</i>	Rocky outcroppins, hard bottoms, coral rubble patches, and subtidal mangrove areas	to 20m	marine
Shaggy Flatworm	<i>Thysanozoon nigrum</i>	temperate reefs	30m	marine
Banded Sea Star	<i>Luidia alternata</i>	Sandy and muddy bottoms around reefs		marine

Coquina Coast
Biological Inventory - Fauna

Common Name	Scientific Name	Habitat	Depth Range (m)	Salinity
Blood brittle star	<i>Hemipholis elongata</i>	mud/sands of embayments, oyster reefs, poorly oxygenated, unvegetated sediments, and fringing sand flats surrounding coral reefs.		marine
Brown sea cucumber	<i>Thyone briareus</i>	reef-associated	as deep as 8800	marine
Caribbean Basket Star	<i>Astrophyton muricatum</i>	attach and cling to soft corals and sea fans on reefs	to 30m	marine
Common Starfish	<i>Asterias forbesi</i>	Range extends 400m offshore, prefers coarse and shelly gravel and rock.		marine
Cookie Dough Sea Cucumber	<i>Isostichopus badionotus</i>	Mostly in areas of soft, sandy bottom, also mixed areas of sand, rock and rubble	to 50m	marine
Crown of Thorns Starfish	<i>Acanthaster planci</i>	coral reefs and coral sands		marine
Five-toothed Sea Cucumber	<i>Actinopyga agassizii</i>	Sandy or soft sediment bottoms and seagrass beds	to 25m	marine
Gray sea star	<i>Luidia clathrata</i>	demersal; Prefers coarse and shelly gravel and rock.	0-100	marine
Green sea cucumber	<i>Thyonella gemmata</i>	reef-associated	as deep as 8800	marine
Harlequin Brittle Star	<i>Ophioderma appressum</i>	coral and temperate reefs	to 25m	marine
Long-spined Sea Urchin	<i>Diadema antillarum</i>	reefs, sandy bottoms, sea grass beds, and rubble	0-130ft	marine
Margined sea star	<i>Astropecten articulatus</i>	prefers coarse and shelly gravel and rock.		marine
Orange-ridged Sea Star	<i>Echinaster spinulosus</i>	sandy bottoms near reefs	5-80ft	marine
Purple spined sea urchin	<i>Arbacia punctulata</i>	demersal	~229	marine
Rock-boring Urchin	<i>Echinometra lucunter</i>	shallow rocky and tidal areas	0-15ft	marine
Sand Dollar	<i>Clypeaster subdepressus</i>	lie in sandy areas around reefs		marine
sea cucumber	<i>Holothuria princeps</i>	soft sediments, bottoms, and reefs	to 54m	marine
sea cucumber	<i>Ocnus pygmaeus</i>	mixed sand and shelly bottoms. Occasionally deep inside of sponges	to 37m	marine
Sea Lily	<i>Comactina echinoptera</i>	reef-associated		marine
Six-keyhole Sand Dollar	<i>Mellita sexiesperforata</i>	sandy bottoms near reefs	0-35ft	marine
Slate Pencil Urchin	<i>Eucidaris tribuloides</i>	coral and temperate reefs	to 25m	marine
Spiny brittle star	<i>Ophiothrix angulata</i>	reef-associated	1-200	marine
Thyone psuedofusus	<i>Thyone psuedofusus</i>	soft sediments, bottoms, and reefs	to 46m	marine
Variiegated urchin	<i>Lytechinus variegatus</i>	demersal; turtle grass beds and low tide lines	0-50	marine
Apple Murex	<i>Phyllonotus ponum</i>	On reefs, oyster beds and seagrasses	shallow to 20m	marine
Atlantic Deer Cowrie	<i>Cypraea cervus</i>	Inhabit rocky outcroppings and hard bottoms	to 20m	marine
Atlantic Geoduck	<i>Panopea bitruncata</i>	demersal		marine
Atlantic Jewel Box	<i>Pseudochama radians</i>	attach to rocks or within crevices of reef	to 76m	marine
Atlantic Jingle Shell	<i>Anomia simplex</i>	Attaches to rocks, shells, lobs, boats, and piers.	shallow to 20m	marine
Atlantic Pygmy Octopus	<i>Octopus joubini</i>	sandy or muddy bottoms adjacent to reefs		marine
Atlantic Strawberry Cockle	<i>Americardia media</i>	demersal; Sand	2-200m	marine

Coquina Coast
Biological Inventory - Fauna

Common Name	Scientific Name	Habitat	Depth Range (m)	Salinity
Atlantic Winged Oyster	<i>Pteria colymbus</i>	Gorgonians, especially sea plumes	10-100ft	marine
Banded Tulip	<i>Fasciolaria hunteria</i>	grass beds, sandy bottoms	0-36ft	marine
Banded Tulip Snail	<i>Fasciolaria liliumhunteria</i>	demersal; Sand and grassy bottoms.	shallow waters	marine
Calico Clam	<i>Macrocallista maculata</i>	demersal; In sand	6-60ft	marine
Cayenne Keyhole Limpet	<i>Diodora cayenensis</i>	Attach to rocks, pilings, and other hard substrates		marine
Chestnut Turban	<i>Turbo castanea</i>	under and among rocks	shallow waters	marine
Coffee Bean Trivia	<i>Trivia pediculus</i>	On or near ascidians	to 50m	marine
Common Janthina	<i>Janthina janthina</i>	float on surface of ocean	surface	marine
Common Nutmeg	<i>Cancellaria reticulata</i>	demersal; Sand, turtle grass beds	to 25m	marine
Common Octopus	<i>Octopus vulgaris</i>	On sea grass beds, areas of sand & rubble, rocky outcroppings & coral reefs	to 25m	marine
Common West Indian Simnia	<i>Simnia acicularis</i>	On sea whips	to 11m	marine
False Drill	<i>Pisania multangula</i>	demersal; On rocky bottoms, oyster and turtle grass beds		marine
Florida Cerith	<i>Cerithium atratum</i>	Rocky, hard, sandy substrates or bottoms	to 30m	marine
Florida Fighting Conch	<i>Strombus alatus</i>	Sandy areas near marine grasses and reefs	shallow waters	marine
Florida Horse Conch	<i>Pleuroploca gigantea</i>	demersal; on sand and rubble	shallow to 20m	marine
Florida Rainbow	<i>Villosa amygdala</i>	demersal		marine
Florida Regal Sea Goddess	<i>Hypselodoris edenticulata</i>	reefs	20-130ft	marine
Florida Rock Snail	<i>Thais haemastomafloridana</i>	Rocks and oyster reefs	to 25m	marine
Giant Atlantic Cockle	<i>Dinocardium robustum</i>	demersal; In mud and sand	shallow to 30m	marine
Glorious neodrillia	<i>Neodrillia cydia</i>	Sand and rock rubble	5-400ft	marine
Half-naked pen shell	<i>Atrina seminuda</i>	demersal; in sediment	low tide line to 90ft	marine
Knobbed Whelk	<i>Busycon carica</i>	demersal; On sand, in shallow water	6-15ft	marine
Lettered Olive	<i>Olive sayana</i>	demersal; on sandy bottoms	shallow to 45m	marine
Lions Paw	<i>Lyropecten nodosa</i>	demersal; Coarse sand and rubble	30-160ft	marine
Little Corrugated Jewel Box	<i>Chama congregata</i>	Attach to rocks, wrecks, and other hard substrates	shallow to 30m	marine
Mahogany Date Mussel	<i>Lithophaga bisulcata</i>	In coral and rocks	shallow to 137m	marine
Orange Frilled Nudibranch	<i>Facelina sp.</i>	reefs	30-100ft	marine
Pellucid File Clam	<i>Lima pellucida</i>	Attach under rocks, ledges, and wrecks	shallow to 30m	marine
Ravenel's Scallop	<i>Euvola raveneli</i>	demersal; In sand or soft sediment bottoms		marine
Red Nose	<i>Hiatella arctica</i>	In cracks and holes within rocks or ledges	shallow to offshore deep reefs	marine
Rose Murex	<i>Haustellum rubidus</i>	demersal; Sandy substrates	to 25m	marine
Rough Scallop	<i>Aequipecten muscosus</i>	demersal; sandy substrates and grass beds	shallow to 165m	marine
Sawtooth Pen clam	<i>Atrina serrata</i>	in shallow mud	to 6m	marine

Coquina Coast
Biological Inventory - Fauna

Common Name	Scientific Name	Habitat	Depth Range (m)	Salinity
Scotch Bonnet	<i>Phalium granulatum</i>	sandy bottoms		marine
Sculptured Top Shell	<i>Calliostoma euglyptum</i>	Rocky, hard, sandy substrates or bottoms	to 60m	marine
Shark Eye	<i>Neverita duplicata</i>	Sandy bottoms	to 25m	marine
Spiny Slipper Shell	<i>Crepidula aculeata</i>	attaches to rocks, other shells, and mangrove roots	shallow to 10m	marine
Spotted cyphoma	<i>Cyphoma macgintyi</i>	attach to and feed on gorgonians		marine
Stiff Pen Shell	<i>Atrina rigida</i>	demersal; in sediment	low tide line to 90ft	marine
Three-toothed Cardita	<i>Pleuromeris tridentata</i>	demersal; on sand and rubble	to 15m	marine
Tinted Cantharus	<i>Pisania tincta</i>	demersal; On rocky bottoms, oyster and turtle grass beds		marine
True Tulip Snail	<i>Fasciolaria tulipa</i>	demersal; sandy, muddy and rocky substrates	intertidal to 25m	marine
Tulip Mussel	<i>Modiolus americanus</i>	On rocks and corals	to 5.5m	marine
Turkey Wing	<i>Arca zebra</i>	Attach to ledges, rocky outcroppings and hard bottoms		marine
Warty Sea Hare (Sea Slug)	<i>Dendrodoris warta</i>	Intertidal, mixed substrate, sand and coral blocks	to 40m	marine
White Basket Shell	<i>Nassarius albus</i>	demersal; On sand	to 30m	marine
White Strigella	<i>Strigella mirabilis</i>	demersal; sandy bottoms	shallow 146m	marine
Armored anemone	<i>Anthopleura varioarmata</i>	Ocean floor		marine
Black Condominium Tunicate	<i>Eudistoma obscuratum</i>	reefs	25-75ft	marine
Brown anemone	<i>Aiptasia pallida</i>	Prefer mangrove roots, dead coral, and rocks on the ocean floor		marine
Colonial Tunicate	<i>Eudistoma capsulatum</i>	encrust hard bottoms, ricks and shipwrecks	shallow to 200m	marine
Colorful sea whip	<i>Leptogorgia virgulata</i>	Ocean floor		marine
Colorwheel Tunicate	<i>Distaplia bermudensis</i>	Encrust other organisms such as sponges, other tunicates, and hydroids and bryozoans	to 50m	marine
Constellation Tunicate	<i>Aplidium constellatum</i>	reef-associated	to 50m	marine
Euherdmania gigantea	<i>Euherdmania gigantea</i>	attach to a variety of bottoms including rocks and ledges	to 50m	marine
Frog Egg Tunicate	<i>Diplosoma listerianum</i>	overgrows other souling organisms like hydroids and bryozoans. Can also grow directly on rock		marine
Geometric Encrusting Tunicates	<i>Botryllus planus</i>	encrust hard bottoms, dead coral, rocks, and shipwrecks	to 50m	marine
Honeysuckle Tunicate	<i>Perophora viridis</i>	encrust on other organisms such as sponges, other tunicates, hydroids, and bryozoans; also hard bottoms, dead, coral, rocks, and shipwrecks	to 30m	marine
Light Bulb Tunicate	<i>Clavelina oblonga</i>	attaches to reefs, wrecks, rocks offshore		marine
Mangrove Tunicate	<i>Ecteinascidia turbinata</i>	associated with mangrove roots	to 25m	marine
Orange Colonial Tunicate	<i>Symplegma rubra</i>	rocks, reefs		marine

Coquina Coast
Biological Inventory - Fauna

Common Name	Scientific Name	Habitat	Depth Range (m)	Salinity
Polyandrocarpa	<i>Eusynstyela tinctoria</i>	encrust hard substrates, especially rocks, pilings and old shells	to 20m	marine
Portuguese man o'war	<i>Physalia physalia</i>	Ocean surface		marine
Row Encrusting Tunicates	<i>Botrylloides sp.</i>	encrust hard bottoms, dead coral, rocks, and shipwrecks	to 50m	marine
Sandy Lobe Tunicate	<i>Eudistoma carolinense</i>	Encrust hard substrates and the bottoms of sea whips and other gorgonians	to 30m	marine
Sea Pork	<i>Aplidium stellatum</i>	reef-associated	to 50m	marine
Social Tunicate	<i>Symplegma brakenhielmi</i>	Stones, algae, other ascidians	shallow to 27fathoms	marine
Social Tunicate	<i>Symplegma viride</i>	encrust hard bottoms, coral, rocks and shipwrecks; attach to other organisms including sponges, bryozoans, hydrozoans, and other tunicates	shallow to 30m	marine
Solitary tunicate	<i>Molgula occidentalis</i>	Ocean floor, with sponges	shallow to 25m	marine
Star coral	<i>Astrangia poculata</i>	Ocean floor		marine
Striped Sea Squirt	<i>Styela plicata</i>	grow on rocks, pilings, shells, and hard bottom outcroppings	shallow to 30m	marine
Tricolor anemone	<i>Calliactis tricolor</i>	Ocean floor		marine
Tube anemone	<i>Ceriantheopsis americana</i>	Ocean floor		marine
Tunicate	<i>Aplidium lobatum</i>	encrust hard bottoms, coral, rocks and shipwrecks	to 50m	marine
White Condominium Tunicate	<i>Eudistoma sp.</i>	reefs	25-75ft	marine
White Speck Tunicate	<i>Didemnum conchyliatum</i>	attach to a variety of substrates	to 50 m	marine
Academy Eel	<i>Apterichtus ansp</i>	demersal	0-200m	marine
Almaco jack	<i>Seriola rivoliana</i>	reef-associated	5-160 (usually 5-35)	marine
Ambiguous Snapper	<i>Lutjanus ambiguus</i>	reef-associated	10ft	marine
American halfbeak	<i>Hyporhamphus meeki</i>	Pelagic-neritic		freshwater; brackish; marine
American Gizzard Shad	<i>Dorosoma cepedianum</i>	Pelagic-neritic	0-33m	freshwater; brackish
American Harvestfish	<i>Peprilus paru</i>	Benthopelagic	15-136	brackish; marine
American pickerel	<i>Esox americanus</i>	demersal		freshwater
American sailfin eel	<i>Letharchus velifer</i>	demersal; commonly found on scallop grounds		marine
American Shad	<i>Alosa sapidissima</i>	pelagic-neritic	0-250m	freshwater
American Spiny flounder	<i>Engyophrys senta</i>	demersal	35-180m	marine
American Stardrum	<i>Stellifer lanceolatus</i>	demersal		20 brackish; marine
American Whitespotted Filefish	<i>Cantherhines macrocerus</i>	reef-associated	2-40m	marine

Coquina Coast
Biological Inventory - Fauna

Common Name	Scientific Name	Habitat	Depth Range (m)	Salinity
Angelfish	<i>Holocanthus isabelita</i>	reef-associated	2-92 (usually 5-25)	marine
Anglefin Whiff	<i>Citharichthys gymnorhinus</i>	demersal	35-201m	marine
Apricot Bass	<i>Plectranthias garrupellus</i>	demersal	58-210m	marine
Argentina georgei	<i>Argentina georgei</i>	Bathydemersal	220-457m	marine
Loose-jawed fish	<i>Aristostomias grimaldii</i>	bathypelagic	25-800	marine
Arrow Stargazer	<i>Gillellus greyae</i>	reef-associated		marine
Atlantic armored searobin	<i>Peristedion greyae</i>	demersal	? - 165	marine
Atlantic batfish	<i>Dibranchius atlanticus</i>	Bathydemersal	45-1300 usually 300-823	marine
Atlantic Bearded Brotula	<i>Brotula barbata</i>	reef-associated	50-650m	marine
Atlantic bigeye	<i>Priacanthus arenatus</i>	reef-associated	10-200 (usually 15-100)	marine
Atlantic Bonito	<i>Sarda sarda</i>	Pelagic-neritic	80-200m	brackish; marine
Atlantic bumper	<i>Chloroscombrus chrysurus</i>	Pelagic-neritic; juveniles live in brackish estuaries	? -55	brackish; marine
Atlantic Butterfish	<i>Peprilus triacanthus</i>	benthopelagic	15-420m	brackish; marine
Atlantic Creolefish	<i>Paranthias furcifer</i>	reef-associated	8-100m	marine
Atlantic croaker	<i>Micropogonias undulatus</i>	demersal	? - 100	brackish; marine
Atlantic Guitarfish	<i>Rhinobatos lentiginosus</i>	sea grasses and mud	0-45ft	marine
Atlantic Manta Ray	<i>Manta birostris</i>	reef-associated; also near surface of open ocean	0-40ft	marine
Atlantic Menhaden	<i>Brevoortia tyrannus</i>	Pelagic-neritic	0-50m	brackish; marine
Atlantic Midshipman	<i>Porichthys plectrodon</i>	demersal; Shallow offshore banks, most common in shrimping grounds	0-100m	marine
Atlantic moonfish	<i>Selene setapinnis</i>	benthopelagic	? - 55	brackish; marine
Atlantic needlefish	<i>Strongylura marina</i>	reef-associated; euryhaline	1 - ?	freshwater; brackish; marine
Atlantic Sharpnose Shark	<i>Rhizoprionodon terraenovae</i>	demersal	10-280m	marine
Atlantic silverside	<i>Menidia menidia</i>	pelagic-neritic		brackish; marine
Atlantic Silverstripe Halfbeak	<i>Hyporhamphus unifasciatus</i>	reef-associated	0-5m	brackish; marine
Atlantic Spadefish	<i>Chaetodipterus faber</i>	Found in- & nearshore around natural & artificial reefs.		brackish; marine
Atlantic Spanish Mackerel	<i>Scomberomorus maculatus</i>	pelagic-neritic	10-35m	marine
Atlantic Spotted Dolphin	<i>Stenella frontalis</i>	coastal and oceanic waters		marine
Atlantic Stingray	<i>Dasyatis sabina</i>	demersal; inhabits coastal waters, including estuaries and lagoons, ascends rivers	0-25m	freshwater; brackish; marine
Atlantic Sturgeon	<i>Acipenser oxyrinchus oxyrinchus</i>	demersal	? - 46	freshwater
Atlantic Thornyhead	<i>Trachyscorpia cristulata</i>	demersal	130-1100m	marine

Coquina Coast
Biological Inventory - Fauna

Common Name	Scientific Name	Habitat	Depth Range (m)	Salinity
Atlantic thread herring	<i>Opisthonema oglinum</i>	reef-associated	5-?	marine
Atlantic tripletail	<i>Lobotes surinamensis</i>	benthopelagic	70 - ?	brackish; marine
Atlantic Trumpetfish	<i>Aulostomus maculatus</i>	reef-associated	2-25m	marine
Bahamas Sawshark	<i>Pristiophorus schroederi</i>	bathydemersal	400-1000m	marine
Bald Blenny	<i>Paraclinus infrons</i>	reef-associated	12-45m	marine
Balloonfish	<i>Diodon holocanthus</i>	reef-associated	2-200m	marine
Banded Blenny	<i>Paraclinus fasciatus</i>	reef-associated	0-2m	marine
Banded Butterflyfish	<i>Chaetodon striatus</i>	reef-associated; along reef ledges	3-55m	marine
Banded drum	<i>Larimus fasciatus</i>	demersal	60	brackish; marine
Banded Jawfish	<i>Opistognathus macrognathus</i>	reef-associated	0-44m	marine
Banded Pipefish	<i>Micrognathus crinitus</i>	reef-associated	1-21m	marine
Bandtail Searobin	<i>Prionotus ophryas</i>	reef-associated	1-171m	marine
Bank Butterflyfish	<i>Prognathodes aya</i>	reef-associated	20-170m	marine
Bank Cusk-eel	<i>Ophidion holbrooki</i>	reef-associated	0-75	marine
Bank Seabass	<i>Centropristis ocyurus</i>	demersal	~55	marine
Banner Goby	<i>Microgobius microlepis</i>	reef-associated	1-5m	marine
Bar Jack	<i>Caranx ruber</i>	reef-associated	0-60ft	marine
Bar Jack (Horse-eye Jack)	<i>Caranx latus</i>	reef-associated	0-140m	freshwater; brackish; marine
Barbfish	<i>Scorpaena brasiliensis</i>	reef-associated	1-100	marine
Barbu	<i>Polydactylus virginicus</i>	demersal	? - 55m	brackish; marine
Barfin Blenny	<i>Malacoctenus versicolor</i>	reef-associated	0-7m	marine
Barfin goby	<i>Coryphopterus alloides</i>	reef-associated	12 - ?m	marine
Barracuda	<i>Sphyraena barracuda</i>	reef-associated	1-100 (usually 3-30)	brackish; marine
Barred Blenny	<i>Hypleurochilus bermudensis</i>	reef-associated		marine
Barred Cardinalfish	<i>Apogon binotatus</i>	reef-associated	1-60m	marine
Barred Grunt	<i>Conodon nobilis</i>	demersal	0-100m	marine
Barred Hamlet	<i>Hypoplectrus puella</i>	reef-associated	3-23m	marine
Barred Searobin	<i>Prionotus martis</i>	demersal	33-?	marine
Barrelfish	<i>Hyperoglyphe perciformis</i>	pelagic-oceanic		marine
Bartail Goby	<i>Coryphopterus thrix</i>	reef-associated	10-20m	marine
Bathypterois bigelowi	<i>Bathypterois bigelowi</i>	bathydemersal	377-986m	marine
Bathypterois viridensis	<i>Bathypterois viridensis</i>	bathydemersal	476-1477m	marine
Bay anchovy	<i>Anchoa mitchilli</i>	Pelagic-neritic; commonly found in shallow tidal areas with muddy bottoms. Tolerate a wide range of salinities	1-36m	brackish

Coquina Coast
Biological Inventory - Fauna

Common Name	Scientific Name	Habitat	Depth Range (m)	Salinity
Bay whiff	<i>Citharichthys spilopterus</i>	demersal; euryhaline	0-75	freshwater; brackish; marine
Beardfish	<i>Polymixia lowei</i>	bathydemersal	50-600m	marine
Beaugregory	<i>Stegastes leucostictus</i>	reef-associated	? - 10m	marine
Belted Sandfish	<i>Serranus subligarius</i>	seagrass and reefs	2-120	marine
Bermuda Sea Chub	<i>Kyphosus saltatrix</i>	young usually live in sargassum communities; adults are reef-associated	1-30 (usually 1-10)	marine
Bertelsen's Lanternfish	<i>Diaphus bertelseni</i>	bathypelagic	0-300m	marine
Bicolor Damselfish	<i>Stegastes partitus</i>	reef-associated	20-80ft	marine
Bicolor eel	<i>Chlopsis bicolor</i>	demersal	80-365m	marine
Bigeye mojarra	<i>Eucinostomus havana</i>	demersal	10-45m	marine
Bigeye Soldierfish	<i>Ostichthys trachypoma</i>	demersal		marine
Bigeye Stargazer	<i>Dactyloscopus crossotus</i>	demersal	0-8m	marine
Bigeye Thresher	<i>Alopias superciliosus</i>	pelagic-oceanic	0-500	marine
Bighead Portholefish	<i>Margrethia obtusirostra</i>	bathypelagic	100-1739m	marine
Bighead Searobin	<i>Prionotus tribulus</i>	demersal		marine
Bignose Shark	<i>Carcharhinus altimus</i>	reef-associated	25-810m	marine
Black Driftfish	<i>Hyperoglyphe bythites</i>	pelagic-oceanic	403m	marine
Black Drum	<i>Pogonias cromis</i>	demersal	10 - ?	brackish; marine
Black grouper	<i>Mycteroperca bonaci</i>	reef-associated	6-33m	marine
Black margate	<i>Anisotremus surinamensis</i>	reef-associated	0-20	marine
Black Seabass	<i>Centropristis striata</i>	reef-associated	1-?	marine
Black Triggerfish (Black Durgon)	<i>Melichthys niger</i>	reef-associated	0-75m	marine
Black Widow (Black Brotula)	<i>Stygnobrotula latebricola</i>	reef-associated		marine
Blackbar Soldierfish	<i>Myripristis jacobus</i>	reef-associated	0-100m	marine
Blackbelly Blenny	<i>Sthammonotus hemphillii</i>	reef-associated		marine
Blackbelly rosefish	<i>Helicolenus dactylopterus</i>	Bathydemersal	50-1100m	marine
Blackcheek tonguefish	<i>Symphurus plagiusa</i>	demersal	0-183 (usually 1-30)	marine
Blackear Bass	<i>Serranus atrobranchus</i>	demersal	10-219m	marine
Blackear wrasse	<i>Halichoeres poeyi</i>	reef-associated	1-15m	marine
Blackedge cusk-eel	<i>Lepophidium brevibarbe</i>	demersal	6-90m	marine
Blackedge moray	<i>Gymnothorax nigromarginatus</i>	reef-associated	10-100	marine
Blackfin Blenny	<i>Paraclinus nigripinnis</i>	reef-associated	0-10m	marine
Blackgut Conger	<i>Gnathophis bathytopos</i>	bathydemersal	180-370m	marine
Blackhead Blenny	<i>Emblemariopsis bahamensis</i>	reef-associated		marine

Coquina Coast
Biological Inventory - Fauna

Common Name	Scientific Name	Habitat	Depth Range (m)	Salinity
Blackline Tilefish	<i>Caulolatilus cyanops</i>	demersal	45-495m	marine
Blackmouth bass	<i>Synagrops bellus</i>	Bathydemersal	60-910 (usually 107-179)	marine
Blacknose shark	<i>Carcharhinus acronotus</i>	reef-associated	9 - ?	marine
Blackpored Eel	<i>Ophichthus melanoporus</i>	demersal	458m	marine
Blackrim cusk-eel	<i>Lepophidium profundorum</i>	demersal	55-365	marine
Blacktip shark	<i>Carcharhinus limbatus</i>	reef-associated; amphidromous	0-64 (usually 0-30)	brackish; marine
Blackwing searobin	<i>Prionotus rubio</i>	demersal	11-13m	brackish; marine
Blind torpedo	<i>Benthobatis marcida</i>	bathydemersal	200-923m	marine
Blotched cusk-eel	<i>Ophidion grayi</i>	demersal	10-60m	marine
Blotched Snake Eel	<i>Callechelys muraena</i>	demersal	27-115	marine
Blue Chromis	<i>Chromis cyanea</i>	reef-associated	3-60m	marine
Blue Angelfish	<i>Holacanthus bermudensis</i>	reef-associated		marine
Blue Croaker	<i>Corvula batabana</i>	reef-associated	3-10m	marine
Blue Dartfish	<i>Ptereleotris calliura</i>	reef-associated	5-50m	marine
Blue Hamlet	<i>Hypoplectrus gemma</i>	reef-associated		marine
Blueback Herring	<i>Alosa aestivalis</i>	pelagic-neritic	5-55m	freshwater; brackish; marine
Bluefish	<i>Pomatomus saltatrix</i>	Pelagic-oceanic; oceanodromous	0-200	brackish; marine
Bluegold goby	<i>Lythrypnus spilus</i>	reef-associated		marine
Bluehead	<i>Thalassoma bifasciatum</i>	reef-associated	0-40m	marine
Bluelip parrotfish	<i>Cryptotomus roseus</i>	reef-associated	? - 60m	marine
Bluestriped Grunt	<i>Haemulon sciurus</i>	reef-associated	0-20m	marine
Bluestriped grunt	<i>Haemulon sciurus</i>	reef-associated	0-30m	marine
Bluethroat pikeblenny	<i>Chaenopsis ocellata</i>	reef-associated	1-5m	marine
Bluntnose sixgill shark	<i>Hexanchus griseus</i>	bathydemersal	1-2500m	marine
Boga	<i>Inermia vittata</i>	reef-associated	15-50m	marine
Bonfish	<i>Albula vulpes</i>	reef-associated	0-84m	brackish
Bonnethead shark	<i>Sphyrna tiburo</i>	reef-associated	10-80 (usually 10-20)	brackish; marine
Bonnetmouth	<i>Emmelichthyops atlanticus</i>	reef-associated	3-90m	marine
Bottlenose Dolphin	<i>Tursiops truncatus</i>	warm, shallow, coastal waters		marine
Brauer's Bristlemouth (Garrick)	<i>Cyclothone braueri</i>	bathypelagic	10-2000m	marine
Brazilian Electric Ray	<i>Narcine brasiliensis</i>	reef-associated	? -43	marine
Bridle Cardinalfish	<i>Apogon aurolineatus</i>	reef-associated	0-75m	marine
Bridled burrfish	<i>Chilomycterus antennatus</i>	reef-associated	2-13m	marine

Coquina Coast
Biological Inventory - Fauna

Common Name	Scientific Name	Habitat	Depth Range (m)	Salinity
Brier skate	<i>Raja eglanteria</i>	demersal	0-50	brackish; marine
Brightspot Skate	<i>Breviraja claramaculata</i>	bathydemersal	293-896m	marine
Bristletooth Conger	<i>Xenomystax congroides</i>	bathydemersal	140-825m	marine
Broad Flounder	<i>Paralichthys squamilentus</i>	demersal		marine
Broadbanded Lanternshark	<i>Etmopterus gracilispinis</i>	benthopelagic	70-1000m	marine
Broadstripe Goby	<i>Elacatinus prochilos</i>	reef-associated	0-25m	marine
Broad-striped anchovy	<i>Anchoa hepsetus</i>	Pelagic-neritic	1-70m	brackish; marine
Brown Chromis	<i>Chromis multilineata</i>	reef-associated	0-60m	marine
Bucktooth Parrotfish	<i>Sparisoma radians</i>	reef-associated	1-12m	marine
Buffalo Trunkfish	<i>Lactophrys trigonus</i>	reef-associated	2-50m	marine
Bull Pipefish	<i>Syngnathus springeri</i>	reef-associated	18-127	marine
Bull shark	<i>Carcharhinus leucas</i>	reef-associated	1-152 (usually 1-30)	freshwater; brackish; marine
Burro Grunt	<i>Pomadasys crocro</i>	demersal; amphidromous	? - 120m	freshwater; brackish; marine
Butter Hamlet	<i>Hypoplectrus unicolor</i>	reef-associated		marine
Caesar Grunt	<i>Haemulon carbonarium</i>	reef-associated	3-25m	marine
Cardinal Soldierfish	<i>Plectrypops retropsinis</i>	reef-associated	? - 22m	marine
Caribbean Lanternshark	<i>Etmopterus hillianus</i>	bathydemersal	180-717m	marine
Cat Shark	<i>Scyliorhinus torrei</i>	bathydemersal	200-600m	marine
Cave Bass	<i>Liopropoma mowbrayi</i>	reef-associated	30-60m	marine
Chain Dogfish	<i>Scyliorhinus retifer</i>	demersal	36-750m	marine
Chain Moray	<i>Echidna catenata</i>	reef-associated	0-12m	marine
Chain pipefish	<i>Syngnathus louisianae</i>	reef-associated		marine
Chalk Bass	<i>Serranus tortugarum</i>	reef-associated	12-396m	marine
Channel flounder	<i>Syacium micrurum</i>	benthopelagic	21-412 (? - 100)	marine
Checkered Blenny	<i>Starksia ocellata</i>	reef-associated	2-20m	marine
Cherubfish	<i>Centropyge argi</i>	reef-associated	5-80m	marine
Chestnut Moray	<i>Enchelycore carychroa</i>	demersal	1-20m	marine
Chub Mackerel	<i>Scomber japonicus</i>	pelagic	0-300m	marine
Clearwing Flyingfish	<i>Cypselurus comatus</i>	Pelagic-neritic		marine
Clown Goby	<i>Microgobius gulosus</i>	demersal		freshwater; brackish; marine
Clown wrasse	<i>Halichoeres maculipinna</i>	reef-associated	2-24m	marine
Cocoa Damsel fish	<i>Stegastes variabilis</i>	reef-associated	0-30m	marine
Code Goby	<i>Gobiosoma robustum</i>	demersal; inhabits seagrass beds and algal mats		brackish; marine

Coquina Coast
Biological Inventory - Fauna

Common Name	Scientific Name	Habitat	Depth Range (m)	Salinity
Colon Goby	<i>Coryphopterus dicrus</i>	reef-associated	3-20m	marine
Common dolphinfish	<i>Coryphaena hippurus</i>	Pelagic-neritic	0-85m	brackish; marine
Common Snook	<i>Centropomus undecimalis</i>	reef-associated	? - 22	Fbarfin
Conchfish	<i>Astrapogon stellatus</i>	reef-associated	1-40m	marine
Coney	<i>Cephalopholis fulva</i>	reef-associated	2-150m	marine
Conger eel	<i>Conger oceanicus</i>	demersal	1-477m	marine
Coral Blenny	<i>Paraclinus cingulatus</i>	reef-associated		marine
Coral Brotula	<i>Ogilbia suarezae</i>	reef-associated	0-10m	marine
Coral Scorpionfish	<i>Scorpaena albifimbria</i>	reef-associated	1-36m	marine
Cottonwick	<i>Haemulon melanurum</i>	reef-associated	3-50m	marine
Cownose ray	<i>Rhinoptera bonasus</i>	benthopelagic	0-22m	brackish; marine
Creole wrasse	<i>Clepticus parrae</i>	reef-associated	1-40m	marine
Crested Blenny	<i>Hypleurochilus geminatus</i>	demersal		marine
Crested Cusk-eel	<i>Ophidion josephi</i>	demersal		marine
Crested cusk-eel	<i>Ophidion welshi</i>	demersal	? - 55	marine
Crested Goby	<i>Lophogobius cyprinoides</i>	demersal		marine
Crested Pipefish	<i>Cosmocampus brachycephalus</i>	demersal		marine
Crestfish	<i>Lophotus lacepede</i>	bathypelagic	0-92m	marine
Crevalle jack (common jack)	<i>Caranx hippos</i>	reef-associated	1-350 (usually 1-200)	brackish; marine
Cuban Dogfish	<i>Squalus cubensis</i>	demersal	60-400m	marine
Cuban leg skate	<i>Cruriraja poeyi</i>	bathydemersal	385-870m	marine
Cuban legskate	<i>Cruriraja atlantis</i>	bathydemersal	512-778m	marine
Cuban Pygmy Skate	<i>Fenestraja cubensis</i>	bathydemersal		marine
Cubbyu	<i>Equetus umbrosus (Pareques umbrosus)</i>	Reef-associated	15-60ft	marine
Dash Goby	<i>Ctenogobius saepepallens</i>	reef-associated	0-40m	marine
Deepwater Pipefish	<i>Cosmocampus profundus</i>	bathydemersal	180-270m	marine
Deepwater Squirrelfish	<i>Sargocentron bullisi</i>	reef-associated	33-110m	marine
Deepwater Tonguefish	<i>Symphurus piger</i>	bathydemersal	75-549m	marine
Diaphanous Hatchet Fish	<i>Sternoptyx diaphana</i>	bathypelagic	400-3676 (usually 500-800)	marine
Doctorfish	<i>Acanthurus chirurgus</i>	reef-associated	15-80ft	marine
Downy Blenny	<i>Labrisomus kalisherae</i>	reef-associated		marine
Dusky basslet	<i>Liogramma anabantoides</i>	reef-associated	22-79m	marine
Dusky Cardinalfish	<i>Phaeoptyx pigmentaria</i>	reef-associated	13-50m	marine

Coquina Coast
Biological Inventory - Fauna

Common Name	Scientific Name	Habitat	Depth Range (m)	Salinity
Dusky Cusk-eel	<i>Parophidion schmidti</i>	demersal		marine
Dusky Damsel	<i>Stegastes adustus</i>	reef-associated	0-3m	marine
Dusky Flounder	<i>Syacium papillosum</i>	reef-associated	10-140 (usually 10-90)	marine
Dusky Jawfish	<i>Opistognathus whitehursti</i>	reef-associated	1-12m	marine
Dusky Shark	<i>Carcharhinus obscurus</i>	reef-associated; found in coastal & offshore waters but not oceanic	0-400	marine
Dusky Squirrelfish	<i>Sargocentron vexillarium</i>	reef-associated	? - 20m	marine
Dwarf Frogfish	<i>Antennarius pauciradiatus</i>	reef-associated	6-73m	marine
Dwarf herring	<i>Jenkinsia lamprotaenia</i>	reef-associated	0-50m	marine
Dwarf Pipefish	<i>Cosmocampus hildebrandi</i>	demersal		marine
Dwarf Sand Perch	<i>Diplectrum bivittatum</i>	reef-associated	0-100m	marine
Dwarf Scorpionfish	<i>Scorpaena elachys</i>	reef-associated	36-90m	marine
Dwarf Seahorse	<i>Hippocampus zosterae</i>	demersal	0-2m	marine
Dwarf Wrasse	<i>Doratonotus megalepis</i>	reef-associated; inhabit Thalassia beds and coral reefs	1-15m	marine
Eelgrass Blenny	<i>Stathmonotus stahli</i>	reef-associated	? - 10m	marine
Emerald Clingfish	<i>Acyrtops beryllinus</i>	reef-associated		marine
Emerald Sleeper	<i>Erotelis smaragdus</i>	demersal		brackish; marine
Etmopterus robinsi	<i>Etmopterus robinsi</i>	bathydemersal	400-800m	marine
Eustomias leptobolus	<i>Eustomias leptobolus</i>	pelagic-oceanic	deep-water	marine
Eustomias monoclonus	<i>Eustomias monoclonus</i>	bathypelagic	2000m	marine
Exechodontes daidaleus	<i>Exechodontes daidaleus</i>	bathydemersal	219-1004m	marine
False Halfbeak	<i>Oxyporhamphus micropterus</i>	Pelagic-neritic		marine
False Herring (False pilchard)	<i>Harengula clupeola</i>	reef-associated	0-50	brackish; marine
False Moray	<i>Kaupichthys hyoprroides</i>	reef-associated	1-95m	marine
False Silverstripe Halfbeak	<i>Hyporhamphus meeki</i>	Pelagic-neritic		freshwater; brackish; marine
Fanfin Skate	<i>Pseudoraja fischeri</i>	pelagic-oceanic	412m	marine
Fantail Mullet	<i>Mugil gyrans</i>	demersal		freshwater; brackish; marine
Fantail Mullet	<i>Mugil trichodon</i>	Pelagic-neritic		marine
Fat Snook	<i>Centropomus parrallelus</i>	demersal		freshwater; brackish; marine
Feather blenny	<i>Hypsoblennius henz</i>	reef-associated		marine
Finetooth Shark	<i>Carcharhinus isodon</i>	demersal	?-10m	marine
Flagfin mojarra	<i>Eucinostomus melanopterus</i>	demersal	0-25m	brackish; marine

Coquina Coast
Biological Inventory - Fauna

Common Name	Scientific Name	Habitat	Depth Range (m)	Salinity
Flameback Angelfish	<i>Centropyge aurantonotus</i>	reef-associated	12-200m	marine
Flamefish	<i>Apogon maculatus</i>	Finds areas it can hide during the day, typically in or under benthic animals such as sponges.	2-70ft	marine
Flat Anchovy	<i>Anchoviella perfasciata</i>	pelagic-neritic	0-50m	marine
Flathead Searobin	<i>Peristedion brevirostre</i>	bathydemersal	55-550m	marine
Florida Blenny	<i>Chasmodes saburrae</i>	demersal	0-6m	brackish; marine
Florida Pompano	<i>Trachinotus carolinus</i>	benthopelagic	? - 70	marine
Footballfish (deep sea angler)	<i>Himantolophus melanolophus</i>	bathypelagic	350-550m	marine
Fourspot Flounder	<i>Hippoglossina oblonga</i>	demersal	0-311m	marine
Four-spotted flounder	<i>Ancylosetta ommata</i>	demersal	4-110	marine
Freckled Blenny	<i>Hypsoblennius ionthas</i>	demersal		marine
Freckled Cardinalfish	<i>Phaeoptyx conklini</i>	reef-associated	0-22m	marine
Freckled skate	<i>Leucoraja garmani</i>	reef-associated	55-530m	marine
Freckled Soapfish	<i>Rypticus bistrispinus</i>	reef-associated		marine
Freckled Stargazer	<i>Gnathagnus egregius</i>	demersal	180-440m	marine
Freckled Tonguefish	<i>Symphurus nebulosus</i>	bathydemersal	239-810m	marine
French Angelfish	<i>Pomacanthus paru</i>	reef-associated	3-100m	marine
French Grunt (Open-mouthed grunt)	<i>Haemulon flavolineatum</i>	reef-associated	0-60m	marine
Frillfin goby	<i>Bathygobius soporator</i>	demersal	0-16	marine
Fringed Flounder	<i>Etropus crossotus</i>	demersal	0-65 (usually 0-30)	brackish; marine
Fringed Sole	<i>Gymnachirus texae</i>	demersal		marine
Fringefin Lanternshark	<i>Etmopterus schultzi</i>	bathydemersal	200-1000m	marine
Gafftopsail sea catfish	<i>Bagre marinus</i>	demersal; euryhaline	0-50	freshwater; brackish; marine
Gag grouper	<i>Mycteroperca microlepis</i>	reef-associated	40-152	brackish; marine
Gauchanche barracuda	<i>Sphyaena guachancho</i>	Pelagic-neritic	0-100	brackish; marine
Gibberfish	<i>Gibberichthys pumilus</i>	bathypelagic	320-1100m	marine
Glass Blenny	<i>Emblemariopsis diaphana</i>	reef-associated		marine
Glass Goby	<i>Coryphopterus hyalinus</i>	reef-associated	8-52m	marine
Glasseye Snapper	<i>Heteropriacanthus</i>	reef-associated	3-300m	marine
Glassy Sweeper	<i>Pempheris schomburgkii</i>	reef-associated	3-30m	marine
Gold Brotula	<i>Gunterichthys longipenis</i>	demersal	0-9m	brackish; marine
Goldentail Moray	<i>Gymnothorax miliaris</i>	reef-associated	0-60m	marine
Goldface tilefish	<i>Caulolatilus chrysops</i>	demersal	76-244m	marine

Coquina Coast
Biological Inventory - Fauna

Common Name	Scientific Name	Habitat	Depth Range (m)	Salinity
Goldline Blenny	<i>Malacoctenus aurolineatus</i>	reef-associated	0-5m	marine
Goldspot Goby	<i>Gnatholepis thompsoni</i>	reef-associated	0-50m	marine
Goldspotted Eel	<i>Myrichthys ocellatus</i>	reef-associated	? - 15m	marine
Goldspotted killifish	<i>Floridichthys carpio</i>	benthopelagic		brackish; marine
Goliath Grouper	<i>Epinephelus itajara</i>	caves, wrecks, and under ledges	10-100	brackish; marine
Goosefish	<i>Lophius americanus</i>	demersal	0-668m	marine
Goosehead Scorpionfish	<i>Scorpaena bergii</i>	reef-associated	? - 75m	marine
Angelfish	<i>Holocanthus bermudensis</i>	associated with reef ledges, nearer the bottom	2-92m	marine
Gray Flounder	<i>Etropus rimosus</i>	demersal	40-180m	marine
Gray Triggerfish	<i>Balistes capriscus</i>	reef-associated		marine
Graysby	<i>Cephalopholis cruentata</i>	reef-associated; inhabit Thalassia beds and coral reefs	0-170m	marine
Great White Shark	<i>Carcharodon carcharias</i>	pelagic-oceanic	0-1280m	brackish; marine
Greater Amberjack	<i>Seriola dumerili</i>	benthopelagic	0-130ft	marine
Greater soapfish	<i>Rypticus saponaceus</i>	reef-associated	1-62m (usually 2-35m)	marine
Green Goby	<i>Microgobius thalassinus</i>	demersal		brackish; marine
Green Lanternshark	<i>Etmopterus virens</i>	bathydemersal	100-1000m	marine
Green Razorfish	<i>Xyrichtys splendens</i>	reef-associated	3-15m	marine
Green Turtle	<i>Chelonia mydas</i>	The young solely swim in pelagic waters, prefer habitats with meadows of sea grass		marine
Greenband wrasse	<i>Halichoeres bathyphilus</i>	reef-associated	27-190m	marine
Greenblotch Parrotfish	<i>Sparisoma atomarium</i>	reef-associated	20-55m	marine
Grey Tilefish (blue-line tilefish)	<i>Caulolatilus microps</i>	demersal	30-236m	marine
Grey triggerfish	<i>Balistes capriscus</i>	reef-associated	0-100 (usually 0-55)	marine
Gulf Butterfish	<i>Peprilus burti</i>	benthopelagic	2-275m	marine
Gulf Flounder	<i>Paralichthys albigutta</i>	demersal	19-130	marine
Gulf Hake	<i>Urophycis cirrata</i>	bathydemersal	27-684m	marine
Gulf Killifish	<i>Fundulus grandis</i>	benthopelagic		freshwater; brackish
Gulf Kingfish (Kingcroaker)	<i>Menticirrhus littoralis</i>	demersal	10 - ?	brackish; marine
Gulf Menhaden	<i>Brevoortia patronus</i>	pelagic-neritic	0-50	marine
Gulf Pipefish	<i>Syngnathus scovelli</i>	demersal; lives in salinity ranges from 0-35ppt	? - 6m	freshwater; brackish; marine
Gulf Smoothhound	<i>Mustelus sinuatus</i>	Pelagic-neritic	20-250m	marine
Gulf Stream Flounder	<i>Citharichthys arcifrons</i>	demersal	46-366m	marine
Gulf toadfish	<i>Opsanus beta</i>	demersal		marine

Coquina Coast
Biological Inventory - Fauna

Common Name	Scientific Name	Habitat	Depth Range (m)	Salinity
Hairy blenny	<i>Labrisomus nuchipinnis</i>	reef-associated	0-10	marine
Hardhead Catfish	<i>Ariopsis felis</i>	reef-associated; Eggs are deposited in estuaries, juveniles also live in lower than seawater salinities		marine; brackish
Hardhead catfish	<i>Arius felis</i>	reef-associated		marine
Hardhead Silverside	<i>Atherinomorus stipes</i>	reef-associated		marine
Harlequin Bass	<i>Serranus tigrinus</i>	reef-associated; Most common in areas with rock or scattered coral	to 40m	marine
Hawksbill turtle	<i>Eretmochelys imbricata</i>	spends most time in shallow lagoons and coral reefs		marine
Highfin Blenny	<i>Lupinoblennius nicholsi</i>	demersal		marine
Highfin Goby	<i>Gobionellus oceanicus</i>	demersal		freshwater; brackish; marine
High-hat	<i>Pareques acuminatus</i>	reef-associated		marine
Hoplunnis similis	<i>Hoplunnis similis</i>	bathydemersal	146-329m	marine
Horned Blenny	<i>Paraclinus grandicomis</i>	reef-associated		marine
Horned Searobin	<i>Bellator militaris</i>	demersal	40-110	marine
Horned Whiff	<i>Citharichthys cornutus</i>	Bathydemersal	30-400 (usually 140-400)	marine
Horse-eye jack	<i>Caranx latus</i>	reef-associated; oceano-estuarine	0-140 (usually 0-20)	freshwater; brackish, marine
Horsehair Eel	<i>Gordiichthys irretitus</i>	demersal	90-200m	marine
Hovering Dartfish	<i>Ptereleotris helenae</i>	reef-associated	3-60m	marine
Humpback Whale	<i>Megaptera novaengliae</i>	deep to coastal waters		marine
Hunchback Scorpionfish	<i>Scorpaena dispar</i>	reef-associated	36-118m	marine
Indigo hamlet	<i>Hypoplectrus indigo</i>	reef-associated	3-45m	marine
Inland silverside	<i>Menidia beryllina</i>	Pelagic-neritic		freshwater; brackish; marine
Inshore lizardfish	<i>Synodus foetens</i>	reef-associated	0-300	brackish; marine
Insular Pipefish	<i>Anarchopterus tectus</i>	demersal		marine
Island Frillfin	<i>Bathygobius mystacium</i>	demersal		marine
Island Goby	<i>Lythrypnus nesiotes</i>	reef-associated		marine
Jackknife Fish	<i>Equetus lanceolatus</i>	reef-associated	10-60m	marine
Jambeau	<i>Parahollandia lineata</i>	demersal	119-396m	marine
Jenny mojarra	<i>Eucinostomus gula</i>	reef-associated	0-55	freshwater; brackish; marine
Kemp's Ridley turtle	<i>Lepidochelys kempii</i>	Neritic; Unlikely to be living off our coast, but may pass through during migration	0-50m	marine

Coquina Coast
Biological Inventory - Fauna

Common Name	Scientific Name	Habitat	Depth Range (m)	Salinity
Key Blenny	<i>Starksia starcki</i>	reef-associated	6-19m	marine
Key Brotula	<i>Ogilbia cayorum</i>	reef-associated	0-33m	marine
Key Worm Eel	<i>Ahlia egmontis</i>	reef-associated		marine
King Mackerel	<i>Scomberomorus cavalla</i>	reef-associated	5-140 (usually 5-15)	marine
King Snake Eel	<i>Ophichthus rex</i>	demersal	64m	marine
Knobbed Porgy	<i>Calamus nodosus</i>	reef-associated	7-90m	marine
Ladyfish	<i>Elops saurus</i>	reef-associated	0-50m	freshwater; brackish, marine
Lancer dragonet	<i>Callionymus bairdi</i>	reef-associated	1-91m	marine
Lancer stargazer	<i>Kathetostoma albigutta</i>	demersal	40-385m	marine
Large spinyfin (Longwing Spinyfin)	<i>Diretmoides pauciradiatus</i>	bathypelagic	0-600m	marine
Largehead hairtail	<i>Trichiurus lepturus</i>	benthopelagic	0-589 (usually 100-350)	brackish; marine
Largescale Tonguefish	<i>Symphurus minor</i>	demersal	18-170m	marine
Largetooth Sawfish	<i>Pristis perotteti</i>	benthopelagic	? - 122m	marine
Least Puffer	<i>Sphoeroides parvus</i>	demersal		marine
Leatherback turtle	<i>Dermochelys coriacea</i>	Prefer deep open ocean during day, and shallow at night for hunting, avoid coral reefs		marine
Leatherjacket	<i>Oligoplites saurus</i>	reef-associated		brackish; marine
Lemon shark	<i>Negaprion brevirostris</i>	reef-associated	0-92	brackish; marine
Leopard Goby	<i>Elacatinus saucrus</i>	reef-associated; lives among the tentacles of living coral		marine
Leopard Searobin	<i>Prionotus scitulus</i>	demersal	? - 45m	marine
Lesser Amberjack	<i>Seriola fasciata</i>	benthopelagic	55-130m	marine
Brazilian Electric ray	<i>Narcine brasiliensis</i>	reef-associated	? - 43m	marine
Lichen Moray	<i>Gymnothorax hubbsi</i>	demersal	60-180m	marine
Lined lanternshark	<i>Etmopterus bullisi</i>	bathydemersal	? - 850m	marine
Lined Seahorse	<i>Hippocampus erectus</i>	reef outgrowth such as sea whips, corals and sponges	1-73m	marine
Lined Sole	<i>Achirus lineatus</i>	reef-associated	? - 20	brackish
Little tunny	<i>Euthynnus alletteratus</i>	most common tuna in Atlantic; reef-associated, oceanodromous	1-150	brackish; marine
Littlehead Porgy	<i>Calamus proridens</i>	reef-associated		marine
Little-scale Threadfin	<i>Polydactylus oligodon</i>	demersal		marine
Liza	<i>Mugil liza</i>	demersal	10-?	freshwater; brackish; marine
Lofty Triplefin	<i>Enneanectes altivelis</i>	reef-associated	3-10m	marine
Loggerhead turtle	<i>Caretta caretta</i>	coasts and open ocean		marine

Coquina Coast
Biological Inventory - Fauna

Common Name	Scientific Name	Habitat	Depth Range (m)	Salinity
Longbeard Whiptail	<i>Ventrifossa macropogon</i>	bathydemersal	439-1000m	marine
Longeye conger	<i>Gnathophis bracheatopos</i>	demersal	55-110m	marine
Longface eel	<i>Saurenhelys cognita</i>	demersal	59-158m	marine
Longfin Blenny	<i>Labrisomus haitiensis</i>	demersal		marine
Longfin Damsel	<i>Stegastes diencaeus</i>	reef-associated	2-45m	marine
Longfin mako	<i>Isurus paucus</i>	pelagic-oceanic	0-200m	marine
Longnose Batfish	<i>Ogcocephalus corniger</i>	demersal	29-230m	marine
Longnose cusk-eel	<i>Ophidion antipholus</i>	benthopelagic	10-69 (usually 15-40)	marine
Longnose grenadier	<i>Caelorinchus carminatus</i>	benthopelagic	210	marine
Longnose Killifish	<i>Fundulus similis</i>	benthopelagic		marine
Longsnout Butterflyfish	<i>Prognathodes aculeatus</i>	reef-associated	1-90m	marine
Longsnout Scorpionfish	<i>Pontinus castor</i>	demersal	45-400m	marine
Longsnout Seahorse	<i>Hippocampus reidi</i>	reef-associated	0-55m	marine
Longspine Porgy	<i>Stenotomus caprinus</i>	demersal	5-185m	marine
Longspine Scorpionfish	<i>Pontinus longispinis</i>	demersal	75-440	marine
Longspine Squirrelfish	<i>Holocentrus rufus</i>	reef-associated	0-32m	marine
Longtail Tonguefish	<i>Symphurus pelicanus</i>	demersal	24-133m	marine
Longtrunk conger	<i>Ariosoma anale</i>	demersal	11-63m	marine
Lookdown	<i>Selene vomer</i>	demersal	1-53m	marine
Lowfin pomfret	<i>Brama dussumieri</i>	Pelagic-neritic	1-300m	marine
Luminous deepsea cardinalfish	<i>Epigonus macrops</i>	bathydemersal	550-1300m	marine
Luminous Hake	<i>Steindachneria argentea</i>	bathydemersal	40-500m	marine
Mackerel Scad	<i>Decapterus macarellus</i>	benthopelagic	130-650ft	marine
Malacho	<i>Elops smithi</i>	pelagic		marine
Manatee	<i>Trichechus manatus</i>	Shallow slow moving estuaries, rivers, canals, saltwater bay and coastal areas		marine
Mangrove Blenny	<i>Lupinoblennius dispar</i>	reef-associated		marine
Mangrove rivulus	<i>Rivulus marmoratus</i>	benthopelagic; euryhaline		freshwater; brackish; marine
Mangrove Snapper (Gray Snapper)	<i>Lutjanus griseus</i>	reef-associated	5-180	brackish; marine
Manytooth conger	<i>Conger triporiceps</i>	reef-associated	3-55m	marine
Marbled Blenny	<i>Paraclinus marmoratus</i>	reef-associated	0-6m	marine
Marbled Cat Shark	<i>Galeus arae</i>	bathydemersal	250-750m	marine
Marbled Moray	<i>Uropterygius macularius</i>	reef-associated	? - 30m	marine

Coquina Coast
Biological Inventory - Fauna

Common Name	Scientific Name	Habitat	Depth Range (m)	Salinity
Margined Snake eel	<i>Ophichthus cruentifer</i>	demersal	36-1350m	marine
Margintail Conger	<i>Paraconger caudilimbatus</i>	reef-associated	? - 75m	marine
Marked Goby	<i>Gobionellus stigmaticus</i>	demersal	shallow, muddy coastal water	marine
Marlin-spike	<i>Nezumia bairdii</i>	benthopelagic	16-1000m	marine
Marsh Killifish	<i>Fundulus confluentus</i>	benthopelagic		freshwater; brackish
Masked Goby	<i>Coryphopterus personatus</i>	reef-associated	3-46m	marine
Masked Stargazer	<i>Gillellus healae</i>	demersal	21-73m	marine
Metallic Lanternfish	<i>Myctophum affine</i>	bathypelagic	0-600m	marine
Midnight Parrotfish	<i>Scarus coelestinus</i>	reef-associated	5-75m	marine
Mimic Blenny	<i>Labrisomus guppyi</i>	reef-associated		marine
Misty grouper	<i>Hyporthodus mystacinus</i>	bathydemersal	30-400m	marine
Molly miller	<i>Scartella cristata</i>	reef-associated	0-10m	marine
Mooneye cusk-eel	<i>Ophidion selenops</i>	reef-associated	12-144	marine
Mottled cusk-eel	<i>Lepophidium jeannae</i>	reef-associated	25-100m	marine
Mottled Jawfish	<i>Opistognathus maxillosus</i>	reef-associated		marine
Mountain Mullet	<i>Agonostomus monticola</i>	Pelagic-neritic; Adults live in freshwater river and streams, young are sometimes found in brackish waters		freshwater; brackish, marine
Moustache Jawfish	<i>Opistognathus lonchurus</i>	reef-associated		marine
Mummichog	<i>Fundulus heteroclitus heteroclitus</i>	benthopelagic		freshwater; brackish; marine
Murray's Abyssal Anglerfish	<i>Melanocetus murrayi</i>	meso- and bathypelagic	100-6370 (usually 1000-2500)	marine
Mushroom Scorpionfish	<i>Scorpaena inermis</i>	reef-associated	1-73m	marine
Mutton Hamlet	<i>Alphestes afer</i>	reef-associated	2-30m	marine
Mutton Snapper	<i>Lutjanus analis</i>	reef-associated	25-95m	brackish; marine
Naked goby	<i>Gobiosoma bosc</i>	demersal; inhabit estuaries and weedy, protected coastal waters		brackish; marine
Naked Sole	<i>Gymnachirus melas</i>	demersal	0-183m	marine
Narrowfin smooth-hound	<i>Mustelus norrisi</i>	demersal	3-100	marine
Nassau Grouper	<i>Epinephelus striatus</i>	reef-associated	1-90m	marine
Neon Goby	<i>Elacatinus oceanops</i>	reef-associated	1-45m	marine
Night Shark	<i>Carcharhinus signatus</i>	benthopelagic	0-600m	marine
North Atlantic Right Whale	<i>Eubalaena glacialis</i>	Use the coast of Florida to give birth in winter.		marine
Northern Kingfish	<i>Menticirrhus saxatilis</i>	demersal	10 - ? M	brackish; marine

Coquina Coast
Biological Inventory - Fauna

Common Name	Scientific Name	Habitat	Depth Range (m)	Salinity
Northern Pipefish	<i>Syngnathus fuscus</i>	demersal	5-366m	freshwater; brackish; marine
Northern Puffer	<i>Sphoeroides maculatus</i>	demersal; Bays, estuaries, more shallow water, sometimes on reefs	10-183m	brackish; marine
Northern Sea Robin	<i>Prionotus carolinus</i>	demersal	15-170	marine
Northern Sennet	<i>Sphyraena borealis</i>	reef-associated		marine
Notchtongue goby	<i>Bathygobius curacao</i>	demersal		marine
Nurse shark	<i>Ginglymostoma cirratum</i>	reef-associated	0-130 (usually 1-35)	brackish; marine
Ocean Surgeonfish	<i>Acanthurus bahianus</i>	reef-associated	15-80ft	marine
Oceanic Lightfish	<i>Vinciguerria ninbaria</i>	bathypelagic	20-5000m	marine
Oceanic two-wing flyingfish	<i>Exocoetus obtusirostris</i>	Pelagic-neritic	0-20m	marine
Ocellate Skate	<i>Raja ackleyi</i>	demersal	? - 45m	marine
Ocellated Frogfish	<i>Antennarius ocellatus</i>	Reef-associated	10-70ft	marine
Ocellated Moray Eel (Honeycomb Moray)	<i>Gymnothorax saxicola</i>	demersal	10-19m	marine
Offshore Hake	<i>Merluccius albidus</i>	bathydemersal	80-1170m	marine
Offshore Tonguefish	<i>Symphurus civitatus</i>	demersal	1-73 (usually 11-45)	marine
Oilfish	<i>Ruvettus pretiosus</i>	benthopelagic	100-800 (usually 200-400)	marine
Opah	<i>Lampris guttatus</i>	bathypelagic	100-400m	marine
Opossum Pipefish	<i>Microphis brachyurus</i>	demersal; Inhabits relatively shallow, still to slow-moving waters, like rivers and estuaries	shallow waters (0.25-3m)	freshwater; brackish; marine
Orangeback Bass	<i>Serranus annularis</i>	reef-associated	10-70m	marine
Orangebelly Goby	<i>Varicus marilynae</i>	demersal	61-91m	marine
Orangespotted Blenny	<i>Hypleurochilus springeri</i>	reef-associated	0-3m	marine
Orangespotted filefish	<i>Cantherhines pullus</i>	reef-associated; Stay close to the bottom, typically around complex structure for refuge	3-50 (usually 3-20)	marine
Orangespotted Goby	<i>Nes longus</i>	reef-associated	0-9m	marine
Oyster Blenny	<i>Hypleurochilus aequipinnis</i>	reef-associated		marine
Oyster Toadfish	<i>Opsanus tau</i>	reef-associated		marine
Pacific Hatchet Fish	<i>Argyropelecus affinis</i>	bathypelagic	1-3872 (usually 1-600)	marine
Painted Wrasse	<i>Halichoeres caudalis</i>	reef-associated	18-100m	marine
Pale Cardinalfish	<i>Apogon planifrons</i>	reef-associated	3-30m	marine
Paleback Goby	<i>Gobulus myersi</i>	reef-associated	0-50m	marine
Palefin batfish	<i>Ogocephalus rostellum</i>	demersal	28-228	marine
Palefin dragonet	<i>Foetorepus goodenbeani</i>	demersal	47-396m	marine

Coquina Coast
Biological Inventory - Fauna

Common Name	Scientific Name	Habitat	Depth Range (m)	Salinity
Palehead Blenny	<i>Labrisomus gobio</i>	reef-associated	0-15m	marine
Palespotted eel	<i>Ophichthys puncticeps</i>	demersal	0-150	marine
Pallid Goby	<i>Coryphopterus eidolon</i>	reef-associated	6-30m	marine
Peacock Flounder (Platefish)	<i>Bothus lunatus</i>	reef-associated	0-100	marine
Pearl Blenny	<i>Entomacrodus nigricans</i>	reef-associated	0-6m	marine
Pearlfish	<i>Carapus bermudensis</i>	reef-associated	1-235m	marine
Pearly Razorfish	<i>Xyrichtys novacula</i>	seagrass beds and around reefs	3-300ft	marine
Pelican Flounder	<i>Chascanopsetta lugubris</i>	bathydemersal	60-3120m	marine
Peppermint Bass	<i>Liopropoma rubre</i>	reef-associated	3-45m	marine
Peppermint Goby	<i>Coryphopterus lipernes</i>	reef-associated	0-13m	marine
Peristedion imberbe	<i>Peristedion imberbe</i>	bathydemersal	247-274m	marine
Permit (also snubnose pompano)	<i>Trachinotus falcatus</i>	reef-associated	0-36	brackish; marine
Pigfish	<i>Orthopristis chrysoptera</i>	demersal	10 -?	brackish; marine
Pigmy Dogfish	<i>Eridacnis barbouri</i>	bathydemersal	400-650m	marine
Pignosed Arrowtooth Eel	<i>Dysomma brevirostre</i>	benthopelagic	200-1000m	marine
Pinfish	<i>Lagodon rhomboides</i>	demersal		freshwater; brackish; marine
Pipehorse	<i>Acentronura dendritica</i>	demersal	? - 16m	marine
Plain Pygmy Skate	<i>Fenestraja ishiyamai</i>	bathydemersal	400-1000m	marine
Planehead filefish	<i>Stephanolepis hispidus</i>	associated with reefs and sargassum; reef-associated; demersal	0-293	marine
Plumed Scorpionfish	<i>Scorpaena grandicornis</i>	reef-associated	1-15m	marine
Polka-dot batfish	<i>Ogcocephalus cubifrons</i>	reef-associated	0-70	marine
Polka-dot Cusk-eel	<i>Otophidium omostigma</i>	demersal	10-50m	marine
Polka-dot Ribbonfish	<i>Desmodema polystictum</i>	bathypelagic	0-500m	marine
Porcupinefish	<i>Diodon hystrix</i>	near caves or recesses and grassy areas	10-60ft	marine
Porkfish	<i>Anisotremus virginicus</i>	reef-associated	2-20m	marine
Prickly brown ray	<i>Dipturus teevani</i>	bathydemersal	320-940m	marine
Princess Parrotfish	<i>Scarus taeniopterus</i>	reef-associated	2-25m	marine
Puddingwife Wrasse	<i>Halichoeres radiatus</i>	reef-associated	2-55m	marine
Puffcheek blenny	<i>Labrisomus bucciferus</i>	reef-associated	0-5m	marine
Pugjaw wormfish	<i>Cerdale floridana</i>	reef-associated	0-30m	marine
Purple Reeffish	<i>Chromis scotti</i>	reef-associated	15-116m	marine
Purplemouth Moray	<i>Gymnothorax vicinus</i>	reef-associated	0-145m	marine
Pygmy Argentine	<i>Glossanodon pygmaeus</i>	bathypelagic	92-458m	marine

Coquina Coast
Biological Inventory - Fauna

Common Name	Scientific Name	Habitat	Depth Range (m)	Salinity
Pygmy Moray	<i>Anarchias similis</i>	reef-associated	0-200	marine
Queen Angelfish	<i>Holacanthus ciliaris</i>	reef-associated	20-60ft	marine
Queen Parrotfish	<i>Scarus vetula</i>	reef-associated	3-25m	marine
Ragged goby	<i>Bollmannia communis</i>	demersal	18-?	marine
Rainbow Parrotfish	<i>Scarus guacamaia</i>	reef-associated	3-25m	marine
Rainbow Runner	<i>Elagatis bipinnulata</i>	reef-associated	0-150m	marine
Rainbow Wrasse	<i>Halichoeres pictus</i>	reef-associated	5-25m	marine
Rainwater Killifish	<i>Lucania parva</i>	Pelagic-neritic		freshwater; brackish; marine
Red Barbier	<i>Hemanthias vivanus</i>	benthopelagic	45-610m	marine
Red cornetfish	<i>Fistularia petimba</i>	reef-associated	10-200m	marine
Red drum	<i>Sciaenops ocellatus</i>	demersal	10-?	brackish; marine
Red Grouper	<i>Epinephelus morio</i>	reef-associated	5-330m	marine
Red Hake	<i>Urophycis earlli</i>	demersal	0-81	marine
Red Hogfish	<i>Decodon puellaris</i>	reef-associated	18-275m	marine
Red Lionfish	<i>Pterois volitans</i>	reef-associated	2-55m	marine
Red Lizardfish	<i>Synodus synodus</i>	reef-associated	2-144m	marine
Red porgy	<i>Pagrus pagrus</i>	benthopelagic	0-250 (usually 10-80)	marine
Red Snapper	<i>Lutjanus campechanus</i>	reef-associated	10-190 (usually 30-130)	marine
Redbanded Parrotfish	<i>Sparisoma aurofrenatum</i>	reef-associated	2-20m	marine
Redear Herring	<i>Harengula humeralis</i>	reef-associated	0-50	marine
Red-eye round herring	<i>Etrumeus teres</i>	Pelagic-neritic	0-150	marine
Redeye Triplefin	<i>Enneanectes pectoralis</i>	reef-associated	0-11m	marine
Redfin Brotula	<i>Petrotyx sanguineus</i>	reef-associated	3-15m	marine
Redfin Needlefish	<i>Strongylura notata forsythia</i>	Pelagic-neritic; euryhaline		freshwater; brackish; marine
Redspotted Hawkfish	<i>Amblycirrhitis pinos</i>	reef-associated	2-46m	marine
Redtail Parrotfish	<i>Sparisoma chrysopterum</i>	reef-associated	1-15m	marine
Redtail Scad	<i>Decapterus tabl</i>	reef-associated	7-400m	marine
Reef Bass	<i>Pseudogramma gregoryi</i>	reef-associated	1-61m	marine
Reef butterflyfish	<i>Chaetodon sedentarius</i>	reef-associated	5-92m (usually 15-40m)	marine
Reef Croaker	<i>Odontoscion dentex</i>	reef-associated	1-30m	marine
Reef Scorpionfish	<i>Scorpaenodes caribbaeus</i>	reef-associated	? - 18m	marine
Reef Shark	<i>Carcharhinus perezii</i>	reef-associated	1-65m	marine
Reef Silverside	<i>Hypoatherina harringtonensis</i>	reef-associated		marine
Reef Squirrelfish	<i>Sargocentron coruscum</i>	reef-associated	1-30m	marine

Coquina Coast
Biological Inventory - Fauna

Common Name	Scientific Name	Habitat	Depth Range (m)	Salinity
Reef-cave Brotula	<i>Grammonus claudei</i>	reef-associated; only found in caverns in coral reefs and rocky shores	6-70m	marine
Reticulate goosefish	<i>Lophiodes reticulatus</i>	bathydemersal	64-820m	marine
Reticulate spikefish	<i>Hollardia hollardi</i>	bathydemersal	230-915m	marine
Reticulated Moray Eel	<i>Muraena retifera</i>	Moderate depths along the outer continental shelf, between rocks and crevices		marine
Ridgefin eel	<i>Callechelys springeri</i>	demersal	22-36m	marine
Rock Beauty	<i>Holacanthus tricolor</i>	reef-associated	3-92m	marine
Rock sea bass	<i>Centropristis philadelphica</i>	reef-associated		marine
Rockcut Goby	<i>Gobiosoma grosvenori</i>	reef-associated		marine
Rosy Blenny	<i>Malacoctenus macropus</i>	reef-associated	0-8m	marine
Rosy Razorfish	<i>Xyrichtys martinicensis</i>	reef-associated	2-21m	marine
Rough Silverside	<i>Membras martinica</i>	Pelagic-neritic		marine
Rough Triggerfish	<i>Canthidermis maculata</i>	reef-associated	1-110m	marine
Roughback Batfish	<i>Ogcocephalus parvus</i>	reef-associated	29-126m	marine
Roughhead Triplefin	<i>Enneanectes boehlkei</i>	reef-associated		marine
Roughskin dogfish	<i>Cirrhigaleus asper</i>	bathydemersal	200-650	marine
Roughtongue Bass	<i>Pronotogrammus martinicensis</i>	demersal	65-230m	marine
Round Herring	<i>Etrumeus teres</i>	Pelagic-neritic	0-150m	marine
Round Scad	<i>Decapterus punctatus</i>	reef-associated	0-100m	marine
Roundel Skate	<i>Raja texana</i>	demersal	? - 183m	marine
Rusty Goby	<i>Priolepis hipoliti</i>	reef-associated	1-130m	marine
Saccogaster staigeri	<i>Saccogaster staigeri</i>	bathydemersal	200-350m	marine
Saddle Bass	<i>Serranus notospilus</i>	reef-associated	75-165m	marine
Saddled Blenny	<i>Malacoctenus triangulatus</i>	reef-associated	0-40m	marine
Saddled Moray	<i>Gymnothorax conspersus</i>	bathydemersal	100-310m	marine
Sailfin Blenny	<i>Emblemaria pandionis</i>	reef-associated	1-12m	marine
Sailfin Flyingfish	<i>Parexocoetus brachypterus</i>	pelagic-neritic	0-20m	marine
Sailfin Molly	<i>Poecilia latipinna</i>	benthopelagic		freshwater; brackish
Sailor's Grunt (Sailor's choice)	<i>Haemulon parra</i>	reef-associated	3-30m	marine
Saltmarsh Topminnow	<i>Fundulus jenkinsii</i>	benthopelagic		brackish; marine
Sand drum	<i>Umbrina coroides</i>	demersal		brackish; marine
Sand perch	<i>Diplectrum formosum</i>	reef-associated	1-80m	marine

Coquina Coast
Biological Inventory - Fauna

Common Name	Scientific Name	Habitat	Depth Range (m)	Salinity
Sand Seatrout	<i>Cynoscion arenarius</i>	demersal; nursery and feeding grounds in estuaries		brackish; marine
Sand Tiger	<i>Carcharias taurus</i>	reef-associated	1-191m	marine
Sand tiger shark	<i>Odontaspis taurus</i>	reef-associated	1-191 (usually 15-25)	marine
Sand Whiff	<i>Citharichthys arenaceus</i>	demersal		marine
Sandbar shark	<i>Carcharhinus plumbeus</i>	benthopelagic	1-280 (usually 20-65)	brackish; marine
Sargassum fish	<i>Histrio histrio</i>	reef-associated	0-50 (usually 0-2)	marine
Sargeant-major	<i>Abudefduf saxatilis</i>	reef-associated	0-20	marine
Sawcheek cardinalfish	<i>Apogon quadrisquamatus</i>	reef-associated	1-75m (usually 12-60m)	marine
Scaled herring (scaled sardine)	<i>Harengula jaguana</i>	reef-associated	? - 22	brackish; marine
Scalloped Hammerhead shark	<i>Sphyrna lewini</i>	Pelagic-oceanic; oceanodromous	0-512 (usually 0-25)	brackish; marine
Scalloped Ribbonfish	<i>Zu cristatus</i>	bathypelagic	? - 90m	marine
Scaly Dragonfish	<i>Stomias affinis</i>	bathypelagic	0-3182m	marine
Scamp Grouper	<i>Mycteroperca phenax</i>	demersal	200-300	brackish; marine
School Bass	<i>Schultzea beta</i>	reef-associated	15-110m	marine
Schoolmaster Snapper	<i>Lutjanus apodus</i>	reef-associated	2-63m	marine
Scrawled Cowfish	<i>Acanthostracion quadricornis</i>	Flat reef areas and sand flats	0-80m	marine
Scrawled Sole	<i>Trinectes inscriptus</i>	demersal		marine
Scup	<i>Stenotomus chrysops</i>	demersal	15 - ?	marine
Sea Lamprey	<i>Petromyzon marinus</i>	demersal; Although living along Atlantic coast, not likely a large community off FL shores; Amphihaline species	1-2200m	freshwater; brackish; marine
Seagrass Eel	<i>Chilorhinus suensonii</i>	reef-associated		marine
Seaweed Blenny	<i>Parablennius marmoreus</i>	demersal	1-30ft	marine
Sharpnose puffer	<i>Canthigaster rostrata</i>	reef-associated	1-40m	marine
Sharptail Eel	<i>Myrichthys breviceps</i>	reef-associated	0-9m	marine
Sharptail Mola	<i>Masturus lanceolatus</i>	bathypelagic	? - 670m	marine
Sheepshead	<i>Archosargus probatocephalus</i>	reef-associated; euryhaline	15- ?	freshwater; brackish; marine
Sheepshead minnow	<i>Cyprinodon variegatus</i>	Benthopelagic		freshwater; brackish; marine
Sheepshead porgy	<i>Calamus penna</i>	reef-associated	3-87m	marine
Shelf Flounder	<i>Etropus cyclosquamus</i>	demersal	~31	marine
Shelf Goby	<i>Bollmannia eigenmanni</i>	demersal	? - 110m	marine
Shoal Flounder	<i>Syacium gunteri</i>	reef-associated	27-95m	marine
Short Bigeye	<i>Pristigenys alta</i>	reef-associated	5-200m	marine

Coquina Coast
Biological Inventory - Fauna

Common Name	Scientific Name	Habitat	Depth Range (m)	Salinity
Shortband herring	<i>Jenkinsia stolifera</i>	reef-associated	0-50m	marine
Shortbelly Eel	<i>Dysomma anguillare</i>	demersal	30-270m	marine
Shortfin Scorpionfish	<i>Scorpaena brachyptera</i>	demersal	45-120m	marine
Shorthead Cusk-eel	<i>Ophidion dromio</i>	benthopelagic	51-183m	marine
Shortnose Batfish	<i>Ogcocephalus nasutus</i>	reef-associated	0-305m	marine
Shortnose greeneye	<i>Chlorophthalmus agassizi</i>	Bathydemersal	50-1000	brackish; marine
Shortnose Sturgeon	<i>Acipenser brevirostrum</i>	demersal		lower salinity than seawater
Shorttail Snake Eel	<i>Callechelys guineensis</i>	demersal	4-35m	marine
Shortwing Searobin	<i>Prionotus stearnsi</i>	demersal	37-300m	marine
Shrimp eel	<i>Ophichthus gomesii</i>	demersal	1-450 (usually 1-90)	marine
Shrimp Flounder	<i>Gastropsetta frontalis</i>	demersal	0-82m	marine
Shy Hamlet	<i>Hypoplectrus guttavarius</i>	reef-associated	3-30m	marine
Silver Anchovy	<i>Engraulis eurystole</i>	Pelagic-neritic	124-282m	marine
Silver mojarra	<i>Eucinostomus argenteus</i>	reef-associated	0-12	freshwater; brackish; marine
Silver perch	<i>Bairdiella chrysoura</i>	demersal; found in coastal waters over sandy and muddy bottoms		freshwater
Silver seatrout	<i>Cynoscion nothus</i>	demersal		brackish; marine
Singlespot Frogfish	<i>Antennarius radiosus</i>	demersal	20-275	marine
Skilletfish	<i>Gobiesox strumosus</i>	reef-associated	0-33 (usually 0-1)	brackish; marine
Slantbrow Batfish	<i>Ogcocephalus declivirostris</i>	demersal	4-388m	marine
Slashcheek goby	<i>Ctenogobius pseudofasciatus</i>	demersal		freshwater; brackish; marine
Sleeper Cusk-eel	<i>Otophidium dormitator</i>	reef-associated	0-15m	marine
Slender mojarra	<i>Eucinostomus jonesii</i>	demersal		marine
Slender Snipefish	<i>Macroramphosus gracilis</i>	pelagic-oceanic	50-500m	marine
Slender Sunfish (slender mola)	<i>Ranzania laevis</i>	pelagic-oceanic	1-140m	marine
Slim Flounder	<i>Monolene antillarum</i>	demersal		marine
Slimehead Grenadier	<i>Ventrifossa mucocephalus</i>	bathydemersal	450-732m	marine
Slippery dick	<i>Halichoeres bivittatus</i>	reef-associated	1-15m	marine
Smallfin Cat Shark	<i>Apristurus parvipinnis</i>	Bathydemersal	600-1380m	marine
Smallmouth Grunt	<i>Haemulon chrysargyreum</i>	reef-associated	0-25m	marine
Smallscale Lizardfish (Shortjaw lizardfish)	<i>Saurida caribbaea</i>	demersal	6-460m	marine

Coquina Coast
Biological Inventory - Fauna

Common Name	Scientific Name	Habitat	Depth Range (m)	Salinity
Smalltooth Sawfish	<i>Pristis pectinata</i>	demersal	? - 10m	brackish; marine
Smallwing flyingfish	<i>Oxyporhamphus micropterus similis</i>	pelagic-neritic		marine
Smooth butterfly ray	<i>Gymnura micrura</i>	demersal	? - 40	brackish; marine
Smooth Dogfish (Dusky smooth-hound)	<i>Mustelus canis</i>	demersal	18-800 (usually 18-200)	brackish; marine
Smooth hammerhead	<i>Sphyrna zygaena</i>	Pelagic-oceanic; oceanodromous	0-200 (usually 0-20)	brackish; marine
Smooth-cheek scorpionfish	<i>Scorpaena isthmensis</i>	demersal	near shore - 110m deep	marine
Snakefish	<i>Trachinocephalus myops</i>	reef-associated	?-400m	marine
Snapper Eel	<i>Echiophis punctifer</i>	reef-associated	0-100m	marine
Snow Bass	<i>Serranus chionaraia</i>	reef-associated	45-90m	marine
Sooty Eel	<i>Bascanichthys bascanium</i>	demersal	0-27m	marine
Southern Flounder	<i>Paralichthys lethostigma</i>	demersal; euryhaline	0-40	freshwater; brackish; marine
Southern kingcroaker	<i>Menticirrhus americanus</i>	demersal	?-40m	brackish; marine
Southern Puffer	<i>Sphoeroides nephelus</i>	reef-associated	0-11m	marine
Southern Sennet	<i>Sphyraena picudilla</i>	reef-associated	1-65m	marine
Southern Stingray	<i>Dasyatis americana</i>	sandy bottoms; demersal	1-80ft	brackish; marine
Spaghetti Eel	<i>Moringua edwardsi</i>	reef-associated		marine
Spanish Grunt (Gray Grunt)	<i>Haemulon macrostomum</i>	reef-associated	5-25m	marine
Spanish Hogfish	<i>Bodianus rufus</i>	reef-associated	1-70m	marine
Spearfish remora	<i>Remora brachyptera</i>	Pelagic-oceanic		marine
Speckled Hind (Calico Grouper)	<i>Epinephelus drummondhayi</i>	demersal	25-183m	marine
Speckled Stargazer	<i>Dactyloscopus moorei</i>	demersal	3-35m	marine
Spined Whiff	<i>Citharichthys dinoceros</i>	bathydemersal	180-2000m	marine
Spinner shark	<i>Carcharhinus brevipinna</i>	reef-associated	0-100	marine
Spiny Searobin	<i>Prionotus alatus</i>	demersal	35-180m	marine
Spinycheek Scorpionfish	<i>Neomerinthe heminwayi</i>	demersal	45-230m	marine
Spinythroat Scorpionfish	<i>Pontinus nematophthalmus</i>	demersal	82-410m	marine
Sponge Cardinalfish	<i>Phaeoptyx xenus</i>	reef-associated	5-60m	marine
Spot croaker	<i>Leiostomus xanthurus</i>	demersal	? - 60	brackish; marine
Spotcheek Blenny	<i>Labrisomus nigricinctus</i>	reef-associated	0-10m	marine
Spotfin Butterflyfish	<i>Chaetodon ocellatus</i>	reef-associated	10-60ft	marine
Spotfin Goby	<i>Oxyurichthys stigmalius</i>	reef-associated	2-60m	marine
Spottail Goby	<i>Ctenogobius stigmaturus</i>	demersal		brackish; marine

Coquina Coast
Biological Inventory - Fauna

Common Name	Scientific Name	Habitat	Depth Range (m)	Salinity
Spottail seabream (Spottail pinfish)	<i>Diplodus holbrooki</i>	demersal	? - 28	marine
Spotted Batfish	<i>Ogcocephalus pantostictus</i>	demersal	9-31m	marine
Spotted Batfish (Polka dot batfish)	<i>Ogcocephalus radiatus</i>	demersal	? - 70m	marine
Spotted codling (spotted hake)	<i>Urophycis regia</i>	demersal	0-494 (usually 110-185)	marine
Spotted Drum	<i>Equetus punctatus</i>	reef-associated	3-30m	marine
Spotted Eagle Ray	<i>Aetobatus narinari</i>	reef-associated	1-80m	marine
Spotted Goatfish	<i>Pseudupeneus maculatus</i>	demersal	5-40ft	marine
Spotted Goby	<i>Coryphopterus punctipectophorus</i>	reef-associated	18-37m	marine
Spotted Moray Eel	<i>Gymnothorax moringa</i>	Reefs, rocks, crevices	6-40ft	marine
Spotted pike-conger	<i>Hoplunnis tenuis</i>	bathydemersal	130-420m	marine
Spotted Scorpionfish	<i>Scorpaena plumieri</i>	reef-associated	1-60m	marine
Spotted Seatrout	<i>Cynoscion nebulosus</i>	demersal; inhabits river estuaries and shallow coastal marine waters over sand bottoms and grass beds.	10-?	brackish; marine
Spotted Snake eel	<i>Ophichthus ophis</i>	demersal	21-50m	marine
Spotted soapfish	<i>Rypticus subbifrenatus</i>	reef-associated	? - 21m	marine
Spotted Spikefish	<i>Hollardia meadi</i>	demersal	54-450m	marine
Spotted Trunkfish	<i>Lactophrys bicaudalis</i>	reef-associated	3-50m	marine
Spotted whiff	<i>Citharichthys macrops</i>	reef-associated	0-90 (usually 0-18)	marine
Spreadfin skate	<i>Dipturus olseni</i>	demersal	91-238m	marine
Squirrelfish	<i>Holocentrus adscensionis</i>	Found hidden in holes and overhangs on ledges and other hard relief; nocturnal species	0-180m	marine
Stargazing seadevil	<i>Ceratiias uranoscopus</i>	bathypelagic	0-2091 usually 500-1000	marine
Stippled Clingfish	<i>Gobiesox punctulatus</i>	demersal		marine
Stoplight Parrotfish	<i>Sparisoma viride</i>	reef-associated	3-50m	marine
Stout Beardfish	<i>Polymixia nobilis</i>	Bathydemersal	100-770 (usually 360-540)	marine
Streamer Bass	<i>Hemanthias aureorubens</i>	demersal	120-610m	marine
Stretchjaw Blenny	<i>Chasmodes longimaxilla</i>	demersal		marine
Striated Frogfish	<i>Antennarius striatus</i>	reef-associated	10-219	marine
String Eel	<i>Gordiichthys leiby</i>	demersal	37-72m	marine

Coquina Coast
Biological Inventory - Fauna

Common Name	Scientific Name	Habitat	Depth Range (m)	Salinity
Striped Bass	<i>Morone saxatilis</i>	demersal; migrates between freshwater and ocean, freshwater is used for spawning	30 - ?	freshwater; brackish; marine
Striped Blenny	<i>Chasmodes bosquianus</i>	demersal; Hard bottom, especially ledges	100ft	brackish; marine
Striped Burrfish	<i>Chilomycterus schoepfii</i>	reef-associated; seagrass beds; winters in artificial reefs	0-11m	marine
Striped croaker	<i>Bairdiella sanctaeluciae</i>	demersal	0-35m	marine
Striped Cusk-eel	<i>Ophidion marginatum</i>	demersal		marine
Striped Grunt	<i>Haemulon striatum</i>	reef-associated	10-100m	marine
Striped killifish	<i>Fundulus majalis</i>	benthopelagic		brackish; marine
Striped mojarra	<i>Eugerres plumieri</i>	demersal		freshwater; brackish; marine
Striped mullet	<i>Mugil cephalus</i>	benthopelagic; catadromous	0-120 (usually 0-10)	freshwater; brackish; marine
Striped Parrotfish	<i>Scarus iseri</i>	reef-associated	3-25m	marine
Striped Searobin	<i>Prionotus evolans</i>	reef-associated	? - 180m	brackish; marine
Summer flounder	<i>Paralichthys dentatus</i>	demersal	10-183	marine
Sunshinefish	<i>Chromis insolata</i>	reef-associated	20-100	marine
Surf Eel	<i>Ichthyapus ophioneus</i>	reef-associated	5-35m	marine
Swallowtail Bass	<i>Anthias woodsi</i>	reef-associated	256-421	marine
Swordtail Jawfish	<i>Lonchopisthus micrognathus</i>	reef-associated		marine
Tarpon	<i>Megalops atlanticus</i>	reef-associated	0-30	freshwater; brackish; marine
Tarpon Snook	<i>Centropomus pectinatus</i>	benthopelagic		freshwater; brackish, marine
Tattler	<i>Serranus phoebe</i>	reef-associated	27-400m	marine
Thickbranch Angler	<i>Linophryne densiramus</i>	bathypelagic	150-1400m	marine
Threadfin Shad	<i>Dorosoma petenense</i>	Pelagic-neritic	0-15m	Freshwater; brackish
Three-eye Flounder	<i>Ancylosetta dilecta</i>	demersal	0-137	marine
Threeline basslet	<i>Lipogramma trilineata</i>	demersal	5-95m	marine
Threespot Damselfish	<i>Stegastes planifrons</i>	reef-associated	1-30m	marine
Thresher Shark	<i>Alopias vulpinus</i>	pelagic	0-550	marine
Tidewater Silverside	<i>Menidia peninsulae</i>	Pelagic-neritic		brackish; marine
Tiger Goby	<i>Elacatinus macrodon</i>	reef-associated	0-7m	marine
Tiger Grouper	<i>Mycteroperca tigris</i>	reef-associated	10-40m	marine
Tiger shark	<i>Galeocerdo cuvier</i>	benthopelagic	0-371	brackish; marine

Coquina Coast
Biological Inventory - Fauna

Common Name	Scientific Name	Habitat	Depth Range (m)	Salinity
Tilefish	<i>Lopholatilus chamaeleonticeps</i>	demersal	80-540m	marine
Timucu	<i>Strongylura timucu</i>	reef-associated; euryhaline	1-3m	freshwater; brackish; marine
Tomtate Grunt	<i>Haemulon aurolineatum</i>	reef-associated	0-30m	marine
Tomtate Grunt	<i>Haemulon aurolineatum</i>	reef-associated; inhabits seagrass beds, sand flats, & patch reefs	? -30	marine
Tricorn Batfish	<i>Zalieutes mcgintyi</i>	demersal	90-660m	marine
Tube-eye	<i>Stylephorus chordatus</i>	bathypelagic	day: 625-800; night:300-600	marine
Tusked Goby	<i>Risor ruber</i>	reef-associated		marine
Twoscale Goby	<i>Gobiosoma longipala</i>	demersal		marine
Twospot cardinalfish	<i>Apogon pseudomaculatus</i>	reef-associated	1-100	marine
Twospot Flounder	<i>Bothus robinsi</i>	demersal	10-90m	marine
Unicorn Crestfish	<i>Eumecichthys fiski</i>	bathypelagic	1000m	marine
Vermilion snapper	<i>Rhomboplites aurorubens</i>	demersal	40-300 (usually 40-100)	marine
Violet Goby (Dragon Goby)	<i>Gobioides broussonnetii</i>	demersal		brackish; marine
Viper Moray	<i>Enchelycore nigricans</i>	reef-associated	1-60m	marine
Warteye Stargazer	<i>Gillellus uranidea</i>	demersal		marine
Weakfish (Squeteague)	<i>Cynoscion regalis</i>	demersal	10-26m	brackish; marine
Web burrfish	<i>Chilomycterus antillarum</i>	reef-associated	1-44m	marine
Western Roughy	<i>Hoplostethus occidentalis</i>	bathypelagic	485-550m	marine
Whale Shark	<i>Rhincodon typus</i>	pelagic-oceanic	0-700m	marine
Whip eel	<i>Bascanichthys scuticaris</i>	reef-associated		marine
White Margate	<i>Haemulon album</i>	reef-associated	20-60m	marine
White mullet	<i>Mugil curema</i>	reef-associated; catadromous	15- ?	freshwater
White suckerfish	<i>Remorina albescens</i>	pelagic-oceanic		marine
Whitebone Porgy	<i>Calamus leucostus</i>	in the sandy areas and sometimes around the reef ledge		marine
White-eye goby	<i>Bollmannia boqueronensis</i>	demersal	27-55m	marine
Whitenose Pipefish	<i>Cosmocampus albirostris</i>	reef-associated	0-50m	marine
Whitespotted soapfish	<i>Rypticus maculatus</i>	demersal		marine
Whitestar cardinalfish	<i>Apogon lachneri</i>	reef-associated	5-70m	marine
Windowpane Flounder	<i>Scophthalmus aquosus</i>	demersal	55-73m	marine
Wrasse Bass	<i>Liopropoma eukrines</i>	reef-associated	30-150m	marine
Wrasse Blenny	<i>Hemiemblemaria simulus</i>	reef-associated	0-20m	marine
Yellow fin mojarra	<i>Gerres cinereus</i>	reef-associated	1-15m	brackish; marine

Coquina Coast
Biological Inventory - Fauna

Common Name	Scientific Name	Habitat	Depth Range (m)	Salinity
Yellow goatfish	<i>Mulloidichthys martinicus</i>	reef-associated	0-49m	marine
Yellow Jack	<i>Caranx bartholomaei</i>	reef-associated	0-50m	marine
Yellow Stingray	<i>Urobatis jamaicensis</i>	reef-associated	1-25m	marine
Yellow Tang	<i>Zebrasoma flavescens</i>	reef-associated	2-46m	marine
Yellowcheek wrasse	<i>Halichoeres cyanocephalus</i>	reef-associated	18-91m	marine
Yellowface pikeblenny	<i>Chaenopsis limbaughii</i>	reef-associated	5-20m	marine
Yellowfin Bass	<i>Anthias nicholsi</i>	benthopelagic		marine
Yellowfin Grouper	<i>Mycteroperca venenosa</i>	reef-associated	2-137m	marine
Yellowfin Menhaden	<i>Brevoortia smithi</i>	Pelagic-neritic	0-50	brackish; marine
Yellowhead Jawfish	<i>Opistognathus aurifrons</i>	reef-associated	3-40m	marine
Yellowhead Wrasse	<i>Halichoeres garnoti</i>	reef-associated	2-80m	marine
Yellowline goby	<i>Elacatinus horsti</i>	reef-associated	7-27m	marine
Yellowmouth grouper	<i>Mycteroperca interstitialis</i>	reef-associated	2-150 (usually 2-35)	marine
Yellowprow Goby	<i>Elacatinus xanthiprora</i>	reef-associated; lives in tubular sponges	7-26m	marine
Yellowtail Damselfish	<i>Microspathodon</i>	reef-associated	0-120m	marine
Yellowtail reeffish	<i>Chromis enchrysur</i>	reef-associated	5-146m	marine
Yellowtail Snapper	<i>Ocyurus chrysurus</i>	reef-associated	0-180m	marine
Zebratail Blenny	<i>Hypoleurochilus caudovittatus</i>	demersal		marine
Linophryne pennibarbata	<i>Linophryne pennibarbata</i>	bathypelagic	910-1500m	marine
Membras vagrans	<i>Membras vagrans</i>	Pelagic-neritic		marine
Monomitopus magnus	<i>Monomitopus magnus</i>	Bathydemersal	730-930m	marine
Mugil gaimardianus	<i>Mugil gaimardianus</i>	reef-associated		marine
Mugil rubrioculus	<i>Mugil rubrioculus</i>	demersal		marine
Neobythites elongatus	<i>Neobythites elongatus</i>	benthopelagic		marine
Nettenchelys exoria	<i>Nettenchelys exoria</i>	bathydemersal	277-494m	marine
Polymetme thaeocoryla	<i>Polymetme thaeocoryla</i>	bathydemersal	213-1400m	marine

Source: Whitney Laboratory for Marine Bioscience, Univ. of Florida

Legend

Species of Concern	
Threatened	
Endangered	
Depleted	